

Anti-CD3D antibody (Internal) (STJ92125)

STJ92125

GENERAL INFORMATION

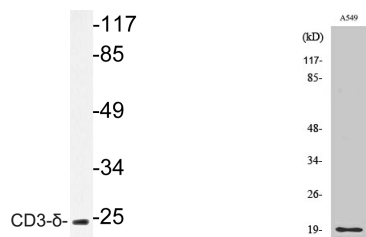
| | |
|--------------------------|---|
| Product Type | Primary antibodies |
| Short Description | Rabbit polyclonal antibody anti-T-Cell Surface Glycoprotein Cd3 Delta Chain (Internal) is suitable for use in Western Blot and ELISA research applications. |
| Applications | WB, ELISA |
| Host/Source | Rabbit |
| Reactivity | Human, Rat, Mouse |

PRODUCT PROPERTIES

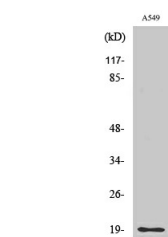
| | |
|-----------------------|--|
| Clonality | Polyclonal |
| Clone ID | |
| Concentration | 1 mg/mL |
| Conjugation | Unconjugated |
| Purification | The antibody was affinity-purified from rabbit anti-serum by affinity-chromatography. |
| Dilution Range | WB 1:500-1:2000 ELISA 1:20000 |
| Formulation | PBS, 50% Glycerol, 0.5% BSA and 0.02% Sodium Azide. |
| Isotype | IgG |
| Storage | Store at -20°C for up to 1 year from the date of receipt, and avoid repeat freeze-thaw cycles. |
| Instruction | |

TARGET INFORMATION

| | |
|---------------------------|---|
| Gene ID | 915 |
| Gene Symbol | CD3D |
| Uniprot ID | CD3D_HUMAN |
| Immunogen | The antiserum was produced against synthesized peptide derived from human CD3-delta at amino acid range 7-56 |
| Immunogen Region | Internal |
| Specificity | CD3D polyclonal antibody (T-Cell Surface Glycoprotein Cd3 Delta Chain) binds to endogenous T-Cell Surface Glycoprotein Cd3 Delta Chain at the amino acid region Internal. |
| Immunogen Sequence | |



Western blot analysis of lysate from A549 cells, using CD3-Delta antibody.



Western blot analysis of various cells using CD3-Delta Polyclonal Antibody

This product is suitable for in-vitro studies under the RESEARCH USE ONLY [RUO] licence. This product must not be used as for diagnostic or other medical purposes.
 St John's Laboratory Ltd, Knowledge Dock Business Centre, University Way, London, E16 2RD | Tel: 0208 223 3081