

Anti-FCGR2C antibody (220-300 C-Term) (STJ92121)

STJ92121

GENERAL INFORMATION

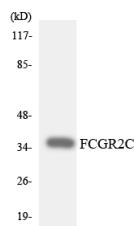
Product Type	Primary antibodies
Short Description	Rabbit polyclonal antibody anti-Low Affinity Immunoglobulin Gamma Fc Region Receptor II-C (220-300 C-Term) is suitable for use in Western Blot and ELISA research applications.
Applications	WB, ELISA
Host/Source	Rabbit
Reactivity	Human, Rat, Mouse

PRODUCT PROPERTIES

Clonality	Polyclonal
Clone ID	
Concentration	1 mg/mL
Conjugation	Unconjugated
Purification	The antibody was affinity-purified from rabbit anti-serum by affinity-chromatography.
Dilution	WB 1:500-1:2000
Range	ELISA 1:40000
Formulation	PBS, 50% Glycerol, 0.5% BSA and 0.02% Sodium Azide.
Isotype	IgG
Storage	Store at -20°C for up to 1 year from the date of receipt, and avoid repeat freeze-thaw cycles.
Instruction	

TARGET INFORMATION

Gene ID	9103
Gene Symbol	FCGR2C
Uniprot ID	FCG2C_HUMAN
Immunogen	The antiserum was produced against synthesized peptide derived from human FCGR2C at amino acid range 251-300
Immunogen Region	220-300 C-Term
Specificity	FCGR2C polyclonal antibody (Low Affinity Immunoglobulin Gamma Fc Region Receptor II-C) binds to endogenous Low Affinity Immunoglobulin Gamma Fc Region Receptor II-C at the amino acid region 220-300 C-Term.
Immunogen Sequence	



Western blot analysis of the lysates from HeLa cells using FCGR2C antibody.

This product is suitable for in-vitro studies under the RESEARCH USE ONLY [RUO] licence. This product must not be used as for diagnostic or other medical purposes.
 St John's Laboratory Ltd, Knowledge Dock Business Centre, University Way, London, E16 2RD | Tel: 0208 223 3081