

Anti-FCGR2A antibody (210-290 C-Term) (STJ92120)

STJ92120

GENERAL INFORMATION

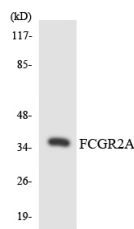
Product Type	Primary antibodies
Short Description	Rabbit polyclonal antibody anti-Low Affinity Immunoglobulin Gamma Fc Region Receptor II-A (210-290 C-Term) is suitable for use in Western Blot and ELISA research applications.
Applications	WB, ELISA
Host/Source	Rabbit
Reactivity	Human, Rat, Mouse

PRODUCT PROPERTIES

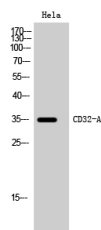
Clonality	Polyclonal
Clone ID	
Concentration	1 mg/mL
Conjugation	Unconjugated
Purification	The antibody was affinity-purified from rabbit anti-serum by affinity-chromatography.
Dilution	WB 1:500-1:2000
Range	ELISA 1:20000
Formulation	PBS, 50% Glycerol, 0.5% BSA and 0.02% Sodium Azide.
Isotype	IgG
Storage	Store at -20°C for up to 1 year from the date of receipt, and avoid repeat freeze-thaw cycles.
Instruction	

TARGET INFORMATION

Gene ID	2212
Gene Symbol	FCGR2A
Uniprot ID	FCG2A_HUMAN
Immunogen	The antiserum was produced against synthesized peptide derived from human FCGR2A at amino acid range 241-290
Immunogen Region	210-290 C-Term
Specificity	FCGR2A polyclonal antibody (Low Affinity Immunoglobulin Gamma Fc Region Receptor II-A) binds to endogenous Low Affinity Immunoglobulin Gamma Fc Region Receptor II-A at the amino acid region 210-290 C-Term.
Immunogen Sequence	



Western blot analysis of the lysates from 293 cells using FCGR2A antibody.



Western blot analysis of HeLa cells using CD32-A Polyclonal Antibody

This product is suitable for in-vitro studies under the RESEARCH USE ONLY [RUO] licence. This product must not be used as for diagnostic or other medical purposes.
 St John's Laboratory Ltd, Knowledge Dock Business Centre, University Way, London, E16 2RD | Tel: 0208 223 3081