

Anti-PECAM1 antibody (660-740) (STJ92117)

STJ92117

GENERAL INFORMATION

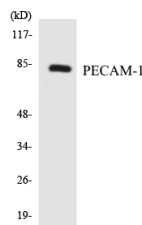
Product Type	Primary antibodies
Short Description	Rabbit polyclonal antibody anti-Platelet Endothelial Cell Adhesion Molecule (660-740) is suitable for use in Western Blot, Immunohistochemistry, Immunofluorescence, Immunocytochemistry and ELISA research applications.
Applications	WB, IHC-P, IF, ICC, ELISA
Host/Source	Rabbit
Reactivity	Human, Mouse

PRODUCT PROPERTIES

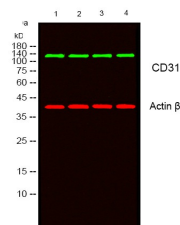
Clonality	Polyclonal
Clone ID	
Concentration	1 mg/mL
Conjugation	Unconjugated
Purification	The antibody was affinity-purified from rabbit anti-serum by affinity-chromatography.
Dilution Range	WB 1:500-1:2000 IHC 1:100-1:300 IF 1:200-1:1000 ELISA 1:20000
Formulation	PBS, 50% Glycerol, 0.5% BSA and 0.02% Sodium Azide.
Isotype	IgG
Storage Instruction	Store at -20°C for up to 1 year from the date of receipt, and avoid repeat freeze-thaw cycles.

TARGET INFORMATION

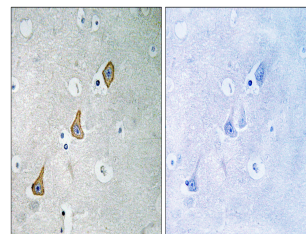
Gene ID	5175
Gene Symbol	PECAM1
Uniprot ID	PECA1_HUMAN
Immunogen	The antiserum was produced against synthesized peptide derived from human PECAM-1 at amino acid range 686-735
Immunogen Region	660-740
Specificity	PECAM1 polyclonal antibody (Platelet Endothelial Cell Adhesion Molecule) binds to endogenous Platelet Endothelial Cell Adhesion Molecule at the amino acid region 660-740.
Immunogen Sequence	



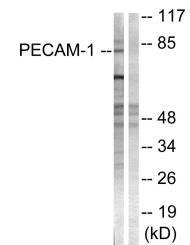
Western blot analysis of the lysates from HT-29 cells using PECAM-1 antibody.



Western blot analysis of lysates from 1) HepG2, 2) K562, 3) L929, 4) mouse brain cells. (Green) primary antibody was diluted at 1:1000, 4°C over night, secondary antibody (cat: (NA) was diluted at 1:10000, 37°C 1hour. (Red) Actin Beta monoclonal antibody (SB7) (cat: (STJ96930) antibody was diluted at 1:5000 as loading control, 4°C over night, secondary antibody (cat: (NA) was diluted at 1:10000, 37°C 1hour.



Immunohistochemistry analysis of paraffin-embedded human brain tissue, using PECAM-1 Antibody. The picture on the right is blocked with the synthesized peptide.



Western blot analysis of lysates from Jurkat cells, using PECAM-1 Antibody. The lane on the right is blocked with the synthesized peptide.

This product is suitable for in-vitro studies under the RESEARCH USE ONLY [RUO] licence. This product must not be used as for diagnostic or other medical purposes.
St John's Laboratory Ltd, Knowledge Dock Business Centre, University Way, London, E16 2RD | Tel: 0208 223 3081