

Anti-CD247 antibody (80-160) (STJ92112)

STJ92112

GENERAL INFORMATION

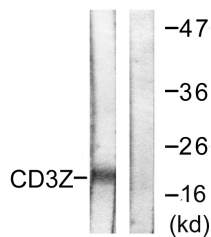
Product Type	Primary antibodies
Short Description	Rabbit polyclonal antibody anti-T-Cell Surface Glycoprotein Cd3 Zeta Chain (80-160) is suitable for use in Western Blot, Immunohistochemistry, Immunofluorescence and ELISA research applications.
Applications	WB, IHC-P, IF-P, ELISA
Host/Source	Rabbit
Reactivity	Human, Mouse, Rat, Monkey

PRODUCT PROPERTIES

Clonality	Polyclonal
Clone ID	
Concentration	1 mg/mL
Conjugation	Unconjugated
Purification	The antibody was affinity-purified from rabbit anti-serum by affinity-chromatography.
Dilution Range	WB 1:500-1:2000 IHC 1:100-1:300 ELISA 1:10000
Formulation	PBS, 50% Glycerol, 0.5% BSA and 0.02% Sodium Azide.
Isotype	IgG
Storage Instruction	Store at 20°C for up to 1 year from the date of receipt, and avoid repeat freeze-thaw cycles.

TARGET INFORMATION

Gene ID	919
Gene Symbol	CD247
Uniprot ID	CD3Z_HUMAN
Immunogen Region	The antiserum was produced against synthesized peptide derived from human CD3 zeta at amino acid range 111-160
Immunogen Region	80-160
Specificity	CD247 polyclonal antibody (T-Cell Surface Glycoprotein Cd3 Zeta Chain) binds to endogenous T-Cell Surface Glycoprotein Cd3 Zeta Chain at the amino acid region 80-160.
Immunogen Sequence	



Western blot analysis of lysates from Jurkat cells, treated with UV 15', using CD3 zeta Antibody. The lane on the right is blocked with the synthesized peptide.