

Anti-BTLA antibody (Internal) (STJ92108)

STJ92108

GENERAL INFORMATION

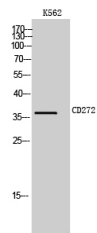
Product Type	Primary antibodies
Short Description	Rabbit polyclonal antibody anti-B-And T-Lymphocyte Attenuator (Internal) is suitable for use in Western Blot and ELISA research applications.
Applications	WB, ELISA
Host/Source	Rabbit
Reactivity	Human, Rat, Mouse

PRODUCT PROPERTIES

Clonality	Polyclonal
Clone ID	
Concentration	1 mg/mL
Conjugation	Unconjugated
Purification	The antibody was affinity-purified from rabbit anti-serum by affinity-chromatography.
Dilution Range	WB 1:500-1:2000 ELISA 1:40000
Formulation	PBS, 50% Glycerol, 0.5% BSA and 0.02% Sodium Azide.
Isotype	IgG
Storage	Store at -20°C for up to 1 year from the date of receipt, and avoid repeat freeze-thaw cycles.
Instruction	

TARGET INFORMATION

Gene ID	151888
Gene Symbol	BTLA
Uniprot ID	BTLA_HUMAN
Immunogen	Synthesized peptide derived from the Internal region of human CD272.
Immunogen Region	Internal
Specificity	BTLA polyclonal antibody (B-And T-Lymphocyte Attenuator) binds to endogenous B-And T-Lymphocyte Attenuator at the amino acid region Internal.
Immunogen Sequence	



Western blot analysis of K562 cells using CD272 Polyclonal Antibody

This product is suitable for in-vitro studies under the RESEARCH USE ONLY [RUO] licence. This product must not be used as for diagnostic or other medical purposes.
St John's Laboratory Ltd, Knowledge Dock Business Centre, University Way, London, E16 2RD | Tel: 0208 223 3081