

## Anti-MS4A1 antibody (C-Term) (STJ92102)

STJ92102

### GENERAL INFORMATION

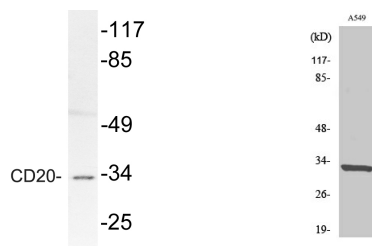
<b>Product Type</b>	Primary antibodies
<b>Short Description</b>	Rabbit polyclonal antibody anti-B-Lymphocyte antigen Cd20 (C-Term) is suitable for use in Western Blot and ELISA research applications.
<b>Applications</b>	WB, ELISA
<b>Host/Source</b>	Rabbit
<b>Reactivity</b>	Human, Rat, Mouse

### PRODUCT PROPERTIES

<b>Clonality</b>	Polyclonal
<b>Clone ID</b>	
<b>Concentration</b>	1 mg/mL
<b>Conjugation</b>	Unconjugated
<b>Purification</b>	The antibody was affinity-purified from rabbit anti-serum by affinity-chromatography.
<b>Dilution Range</b>	WB 1:500-1:2000 ELISA 1:40000
<b>Formulation</b>	PBS, 50% Glycerol, 0.5% BSA and 0.02% Sodium Azide.
<b>Isotype</b>	IgG
<b>Storage Instruction</b>	Store at -20°C for up to 1 year from the date of receipt, and avoid repeat freeze-thaw cycles.

### TARGET INFORMATION

<b>Gene ID</b>	931
<b>Gene Symbol</b>	MS4A1
<b>Uniprot ID</b>	CD20_HUMAN
<b>Immunogen</b>	The antiserum was produced against synthesized peptide derived from human CD20 at amino acid range 181-230
<b>Immunogen Region</b>	C-Term
<b>Specificity</b>	MS4A1 polyclonal antibody (B-Lymphocyte Antigen Cd20) binds to endogenous B-Lymphocyte Antigen Cd20 at the amino acid region C-Term.
<b>Immunogen Sequence</b>	



Western blot analysis of lysate from A549 cells, using CD20 antibody.

Western blot analysis of various cells using CD20 Polyclonal Antibody cells nucleus extracted by Minute TM Cytoplasmic and Nuclear Fractionation kit (SC-003, Inventiotech, MN, USA).

This product is suitable for in-vitro studies under the RESEARCH USE ONLY [RUO] licence. This product must not be used as for diagnostic or other medical purposes.  
St John's Laboratory Ltd, Knowledge Dock Business Centre, University Way, London, E16 2RD | Tel: 0208 223 3081