

## Anti-CD1E antibody (190-270 Internal) (STJ92101)

STJ92101

### GENERAL INFORMATION

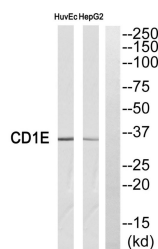
<b>Product Type</b>	Primary antibodies
<b>Short Description</b>	Rabbit polyclonal antibody anti-T-Cell Surface Glycoprotein Cd1e-Membrane-Associated (190-270 Internal) is suitable for use in Western Blot and ELISA research applications.
<b>Applications</b>	WB, ELISA
<b>Host/Source</b>	Rabbit
<b>Reactivity</b>	Human, Rat, Mouse

### PRODUCT PROPERTIES

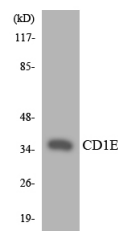
<b>Clonality</b>	Polyclonal
<b>Clone ID</b>	
<b>Concentration</b>	1 mg/mL
<b>Conjugation</b>	Unconjugated
<b>Purification</b>	The antibody was affinity-purified from rabbit anti-serum by affinity-chromatography.
<b>Dilution</b>	WB 1:500-1:2000
<b>Range</b>	ELISA 1:10000
<b>Formulation</b>	PBS, 50% Glycerol, 0.5% BSA and 0.02% Sodium Azide.
<b>Isotype</b>	IgG
<b>Storage</b>	Store at -20°C for up to 1 year from the date of receipt, and avoid repeat freeze-thaw cycles.
<b>Instruction</b>	

### TARGET INFORMATION

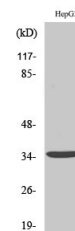
<b>Gene ID</b>	913
<b>Gene Symbol</b>	CD1E
<b>Uniprot ID</b>	CD1E_HUMAN
<b>Immunogen</b>	The antiserum was produced against synthesized peptide derived from human CD1E at amino acid range 217-266
<b>Immunogen Region</b>	190-270 Internal
<b>Specificity</b>	CD1E polyclonal antibody (T-Cell Surface Glycoprotein Cd1e-Membrane-Associated) binds to endogenous T-Cell Surface Glycoprotein Cd1e-Membrane-Associated at the amino acid region 190-270 Internal.
<b>Immunogen Sequence</b>	



Western blot analysis of CD1E Antibody. The lane on the right is blocked with the CD1E peptide.



Western blot analysis of the lysates from RAW264.7 cells using CD1E antibody.



Western blot analysis of various cells using CD1E Polyclonal Antibody

This product is suitable for in-vitro studies under the RESEARCH USE ONLY [RUO] licence. This product must not be used as for diagnostic or other medical purposes.  
 St John's Laboratory Ltd, Knowledge Dock Business Centre, University Way, London, E16 2RD | Tel: 0208 223 3081