

Anti-SIRPB1 antibody (200-280 Internal) (STJ92097)

STJ92097

GENERAL INFORMATION

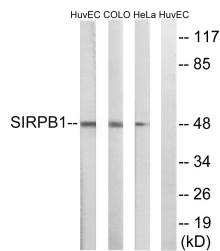
Product Type	Primary antibodies
Short Description	Rabbit polyclonal antibody anti-Signal-Regulatory Protein Beta-1 (200-280 Internal) is suitable for use in Western Blot and ELISA research applications.
Applications	WB, ELISA
Host/Source	Rabbit
Reactivity	Human, Rat, Mouse

PRODUCT PROPERTIES

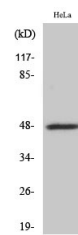
Clonality	Polyclonal
Clone ID	
Concentration	1 mg/mL
Conjugation	Unconjugated
Purification	The antibody was affinity-purified from rabbit anti-serum by affinity-chromatography.
Dilution Range	WB 1:500-1:2000 ELISA 1:5000
Formulation	PBS, 50% Glycerol, 0.5% BSA and 0.02% Sodium Azide.
Isotype	IgG
Storage	Store at -20°C for up to 1 year from the date of receipt, and avoid repeat freeze-thaw cycles.
Instruction	

TARGET INFORMATION

Gene ID	10326
Gene Symbol	SIRPB1
Uniprot ID	SIRB1_HUMAN
Immunogen	The antiserum was produced against synthesized peptide derived from human SIRPB1 at amino acid range 231-280
Immunogen Region	200-280 Internal
Specificity	SIRPB1 polyclonal antibody (Signal-Regulatory Protein Beta-1) binds to endogenous Signal-Regulatory Protein Beta-1 at the amino acid region 200-280 Internal.
Immunogen Sequence	



Western blot analysis of lysates from HeLa, COLO, and HUVEC cells, using SIRPB1 Antibody. The lane on the right is blocked with the synthesized peptide.



Western blot analysis of various cells using CD172b Polyclonal Antibody

This product is suitable for in-vitro studies under the RESEARCH USE ONLY [RUO] licence. This product must not be used as for diagnostic or other medical purposes.
 St John's Laboratory Ltd, Knowledge Dock Business Centre, University Way, London, E16 2RD | Tel: 0208 223 3081