

Anti-SDC1 antibody (60-140 Internal) (STJ92089)

STJ92089

GENERAL INFORMATION

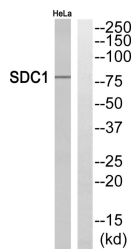
Product Type	Primary antibodies
Short Description	Rabbit polyclonal antibody anti-Syndecan-1 (60-140 Internal) is suitable for use in Western Blot and ELISA research applications.
Applications	WB, ELISA
Host/Source	Rabbit
Reactivity	Human, Rat

PRODUCT PROPERTIES

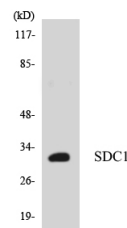
Clonality	Polyclonal
Clone ID	
Concentration	1 mg/mL
Conjugation	Unconjugated
Purification	The antibody was affinity-purified from rabbit anti-serum by affinity-chromatography.
Dilution Range	WB 1:500-1:2000 ELISA 1:20000
Formulation	PBS, 50% Glycerol, 0.5% BSA and 0.02% Sodium Azide.
Isotype	IgG
Storage Instruction	Store at -20°C for up to 1 year from the date of receipt, and avoid repeat freeze-thaw cycles.

TARGET INFORMATION

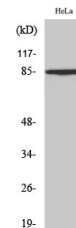
Gene ID	6382
Gene Symbol	SDC1
Uniprot ID	SDC1_HUMAN
Immunogen	The antiserum was produced against synthesized peptide derived from human SDC1 at amino acid range 91-140
Immunogen Region	60-140 Internal
Specificity	SDC1 polyclonal antibody (Syndecan-1) binds to endogenous Syndecan-1 at the amino acid region 60-140 Internal.
Immunogen Sequence	



Western blot analysis of SDC1 Antibody. The lane on the right is blocked with the SDC1 peptide.



Western blot analysis of the lysates from HepG2 cells using SDC1 antibody.



Western blot analysis of various cells using CD138 Polyclonal Antibody

This product is suitable for in-vitro studies under the RESEARCH USE ONLY [RUO] licence. This product must not be used as for diagnostic or other medical purposes.
St John's Laboratory Ltd, Knowledge Dock Business Centre, University Way, London, E16 2RD | Tel: 0208 223 3081