

Anti-SEMA7A antibody (150-230 Internal) (STJ92082)

STJ92082

GENERAL INFORMATION

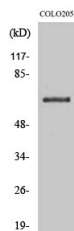
Product Type	Primary antibodies
Short Description	Rabbit polyclonal antibody anti-Semaphorin-7a (150-230 Internal) is suitable for use in Western Blot and ELISA research applications.
Applications	WB, ELISA
Host/Source	Rabbit
Reactivity	Human, Mouse, Rat

PRODUCT PROPERTIES

Clonality	Polyclonal
Clone ID	
Concentration	1 mg/mL
Conjugation	Unconjugated
Purification	The antibody was affinity-purified from rabbit anti-serum by affinity-chromatography.
Dilution Range	WB 1:500-1:2000 ELISA 1:5000
Formulation	PBS, 50% Glycerol, 0.5% BSA and 0.02% Sodium Azide.
Isotype	IgG
Storage Instruction	Store at -20°C for up to 1 year from the date of receipt, and avoid repeat freeze-thaw cycles.

TARGET INFORMATION

Gene ID	8482
Gene Symbol	SEMA7A
Uniprot ID	SEM7A_HUMAN
Immunogen	Synthesized peptide derived from CD108. at amino acid range: 150-230
Immunogen Region	150-230 Internal
Specificity	SEMA7A polyclonal antibody (Semaphorin-7a) binds to endogenous Semaphorin-7a at the amino acid region 150-230 Internal.
Immunogen Sequence	



Western blot analysis of various cells using CD108 Polyclonal Antibody