

Anti-ACKR4 antibody (20-100 N-Term) (STJ92077)

STJ92077

GENERAL INFORMATION

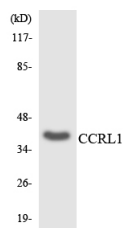
Product Type	Primary antibodies
Short Description	Rabbit polyclonal antibody anti-Atypical Chemokine Receptor 4 (20-100 N-Term) is suitable for use in Western Blot, Immunofluorescence, Immunocytochemistry and ELISA research applications.
Applications	WB, IF, ICC, ELISA
Host/Source	Rabbit
Reactivity	Human, Mouse

PRODUCT PROPERTIES

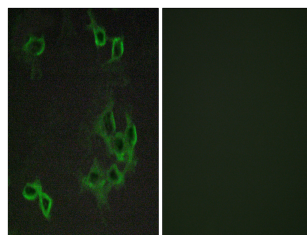
Clonality	Polyclonal
Clone ID	
Concentration	1 mg/mL
Conjugation	Unconjugated
Purification	The antibody was affinity-purified from rabbit anti-serum by affinity-chromatography.
Dilution Range	WB 1:500-1:2000 IF 1:200-1:1000 ELISA 1:5000
Formulation	PBS, 50% Glycerol, 0.5% BSA and 0.02% Sodium Azide.
Isotype	IgG
Storage Instruction	Store at -20°C for up to 1 year from the date of receipt, and avoid repeat freeze-thaw cycles.

TARGET INFORMATION

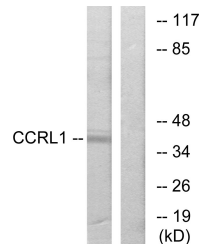
Gene ID	51554
Gene Symbol	ACKR4
Uniprot ID	ACKR4_HUMAN
Immunogen	The antiserum was produced against synthesized peptide derived from human CCRL1 at amino acid range 5-54
Immunogen Region	20-100 N-Term
Specificity	ACKR4 polyclonal antibody (Atypical Chemokine Receptor 4) binds to endogenous Atypical Chemokine Receptor 4 at the amino acid region 20-100 N-Term.
Immunogen Sequence	



Western blot analysis of the lysates from HepG2 cells using CCRL1 antibody.



Immunofluorescence analysis of COS7 cells, using CCRL1 Antibody. The picture on the right is blocked with the synthesized peptide.



Western blot analysis of lysates from 293 cells, using CCRL1 Antibody. The lane on the right is blocked with the synthesized peptide.



Western blot analysis of various cells using CCRL1 Polyclonal Antibody diluted at 1: 1000

This product is suitable for in-vitro studies under the RESEARCH USE ONLY [RUO] licence. This product must not be used as for diagnostic or other medical purposes.
St John's Laboratory Ltd, Knowledge Dock Business Centre, University Way, London, E16 2RD | Tel: 0208 223 3081