

Anti-CCKBR antibody (30-110 N-Term) (STJ92073)

STJ92073

GENERAL INFORMATION

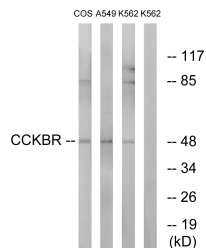
Product Type	Primary antibodies
Short Description	Rabbit polyclonal antibody anti-Gastrin/Cholecystokinin Type B Receptor (30-110 N-Term) is suitable for use in Western Blot and ELISA research applications.
Applications	WB, ELISA
Host/Source	Rabbit
Reactivity	Human, Mouse, Rat, Monkey

PRODUCT PROPERTIES

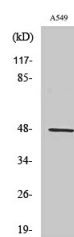
Clonality	Polyclonal
Clone ID	
Concentration	1 mg/mL
Conjugation	Unconjugated
Purification	The antibody was affinity-purified from rabbit anti-serum by affinity-chromatography.
Dilution Range	WB 1:500-1:2000 ELISA 1:20000
Formulation	PBS, 50% Glycerol, 0.5% BSA and 0.02% Sodium Azide.
Isotype	IgG
Storage	Store at -20°C for up to 1 year from the date of receipt, and avoid repeat freeze-thaw cycles.
Instruction	

TARGET INFORMATION

Gene ID	887
Gene Symbol	CCKBR
Uniprot ID	GASR_HUMAN
Immunogen	The antiserum was produced against synthesized peptide derived from human CCKBR at amino acid range 11-60
Immunogen Region	30-110 N-Term
Specificity	CCKBR polyclonal antibody (Gastrin/Cholecystokinin Type B Receptor) binds to endogenous Gastrin/Cholecystokinin Type B Receptor at the amino acid region 30-110 N-Term.
Immunogen Sequence	



Western blot analysis of lysates from A549, COS7, and K562 cells, using CCKBR Antibody. The lane on the right is blocked with the synthesized peptide.



Western blot analysis of various cells using CCK-BR Polyclonal Antibody