

## Anti-SPDL1 antibody (510-590 C-Term) (STJ92070)

STJ92070

### GENERAL INFORMATION

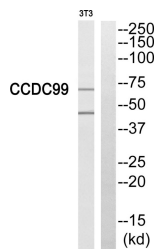
<b>Product Type</b>	Primary antibodies
<b>Short Description</b>	Rabbit polyclonal antibody anti-Protein Spindly (510-590 C-Term) is suitable for use in Western Blot and ELISA research applications.
<b>Applications</b>	WB, ELISA
<b>Host/Source</b>	Rabbit
<b>Reactivity</b>	Human, Rat, Mouse

### PRODUCT PROPERTIES

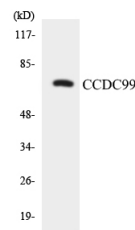
<b>Clonality</b>	Polyclonal
<b>Clone ID</b>	
<b>Concentration</b>	1 mg/mL
<b>Conjugation</b>	Unconjugated
<b>Purification</b>	The antibody was affinity-purified from rabbit anti-serum by affinity-chromatography.
<b>Dilution Range</b>	WB 1:500-1:2000 ELISA 1:40000
<b>Formulation</b>	PBS, 50% Glycerol, 0.5% BSA and 0.02% Sodium Azide.
<b>Isotype</b>	IgG
<b>Storage Instruction</b>	Store at -20°C for up to 1 year from the date of receipt, and avoid repeat freeze-thaw cycles.

### TARGET INFORMATION

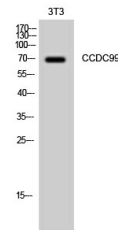
<b>Gene ID</b>	54908
<b>Gene Symbol</b>	SPDL1
<b>Uniprot ID</b>	SPDLY_HUMAN
<b>Immunogen</b>	The antiserum was produced against synthesized peptide derived from human CCDC99 at amino acid range 541-590
<b>Immunogen Region</b>	510-590 C-Term
<b>Specificity</b>	SPDL1 polyclonal antibody (Protein Spindly) binds to endogenous Protein Spindly at the amino acid region 510-590 C-Term.
<b>Immunogen Sequence</b>	



Western blot analysis of CCDC99 Antibody. The lane on the right is blocked with the CCDC99 peptide.



Western blot analysis of the lysates from K562 cells using CCDC99 antibody.



Western blot analysis of 3T3 cells using CCDC99 Polyclonal Antibody diluted at 1: 1000

This product is suitable for in-vitro studies under the RESEARCH USE ONLY [RUO] licence. This product must not be used as for diagnostic or other medical purposes.  
St John's Laboratory Ltd, Knowledge Dock Business Centre, University Way, London, E16 2RD | Tel: 0208 223 3081