

Anti-CEP95 antibody (560-640 Internal) (STJ92069)

STJ92069

GENERAL INFORMATION

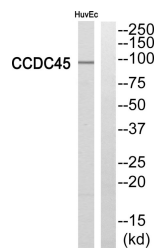
Product Type	Primary antibodies
Short Description	Rabbit polyclonal antibody anti-Centrosomal Protein Of 95 Kda (560-640 Internal) is suitable for use in Western Blot and ELISA research applications.
Applications	WB, ELISA
Host/Source	Rabbit
Reactivity	Human, Mouse, Rat

PRODUCT PROPERTIES

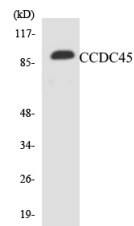
Clonality	Polyclonal
Clone ID	
Concentration	1 mg/mL
Conjugation	Unconjugated
Purification	The antibody was affinity-purified from rabbit anti-serum by affinity-chromatography.
Dilution Range	WB 1:500-1:2000 ELISA 1:40000
Formulation	PBS, 50% Glycerol, 0.5% BSA and 0.02% Sodium Azide.
Isotype	IgG
Storage	Store at -20°C for up to 1 year from the date of receipt, and avoid repeat freeze-thaw cycles.
Instruction	

TARGET INFORMATION

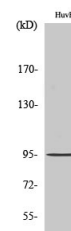
Gene ID	90799
Gene Symbol	CEP95
Uniprot ID	CEP95_HUMAN
Immunogen	The antiserum was produced against synthesized peptide derived from human CCDC45 at amino acid range 591-640
Immunogen Region	560-640 Internal
Specificity	CEP95 polyclonal antibody (Centrosomal Protein Of 95 Kda) binds to endogenous Centrosomal Protein Of 95 Kda at the amino acid region 560-640 Internal.
Immunogen Sequence	



Western blot analysis of CCDC45 Antibody. The lane on the right is blocked with the CCDC45 peptide.



Western blot analysis of the lysates from Jurkat cells using CCDC45 antibody.



Western blot analysis of various cells using CCDC45 Polyclonal Antibody.