

## Anti-BEND4 antibody (340-420 Internal) (STJ92068)

STJ92068

### GENERAL INFORMATION

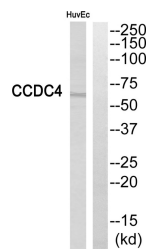
<b>Product Type</b>	Primary antibodies
<b>Short Description</b>	Rabbit polyclonal antibody anti-Ben Domain-Containing Protein 4 (340-420 Internal) is suitable for use in Western Blot and ELISA research applications.
<b>Applications</b>	WB, ELISA
<b>Host/Source</b>	Rabbit
<b>Reactivity</b>	Human, Rat, Mouse

### PRODUCT PROPERTIES

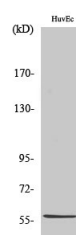
<b>Clonality</b>	Polyclonal
<b>Clone ID</b>	
<b>Concentration</b>	1 mg/mL
<b>Conjugation</b>	Unconjugated
<b>Purification</b>	The antibody was affinity-purified from rabbit anti-serum by affinity-chromatography.
<b>Dilution Range</b>	WB 1:500-1:2000 ELISA 1:40000
<b>Formulation</b>	PBS, 50% Glycerol, 0.5% BSA and 0.02% Sodium Azide.
<b>Isotype</b>	IgG
<b>Storage</b>	Store at -20°C for up to 1 year from the date of receipt, and avoid repeat freeze-thaw cycles.
<b>Instruction</b>	

### TARGET INFORMATION

<b>Gene ID</b>	<a href="#">389206</a>
<b>Gene Symbol</b>	<a href="#">BEND4</a>
<b>Uniprot ID</b>	<a href="#">BEND4_HUMAN</a>
<b>Immunogen</b>	The antiserum was produced against synthesized peptide derived from human BEND4 at amino acid range 371-420
<b>Immunogen Region</b>	340-420 Internal
<b>Specificity</b>	BEND4 polyclonal antibody (Ben Domain-Containing Protein 4) binds to endogenous Ben Domain-Containing Protein 4 at the amino acid region 340-420 Internal.
<b>Immunogen Sequence</b>	



Western blot analysis of BEND4 Antibody. The lane on the right is blocked with the BEND4 peptide.



Western blot analysis of various cells using CCDC4 Polyclonal Antibody

This product is suitable for in-vitro studies under the RESEARCH USE ONLY [RUO] licence. This product must not be used as for diagnostic or other medical purposes.  
St John's Laboratory Ltd, Knowledge Dock Business Centre, University Way, London, E16 2RD | Tel: 0208 223 3081