

Anti-CCDC102A antibody (310-390 Internal) (STJ92065)

STJ92065

GENERAL INFORMATION

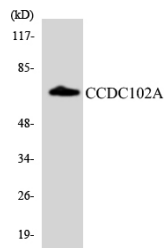
Product Type	Primary antibodies
Short Description	Rabbit polyclonal antibody anti-Coiled-Coil Domain-Containing Protein 102a (310-390 Internal) is suitable for use in Western Blot and ELISA research applications.
Applications	WB, ELISA
Host/Source	Rabbit
Reactivity	Human, Mouse

PRODUCT PROPERTIES

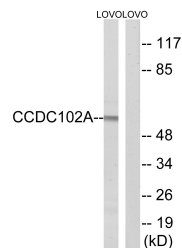
Clonality	Polyclonal
Clone ID	
Concentration	1 mg/mL
Conjugation	Unconjugated
Purification	The antibody was affinity-purified from rabbit anti-serum by affinity-chromatography.
Dilution Range	WB 1:500-1:2000 ELISA 1:20000
Formulation	PBS, 50% Glycerol, 0.5% BSA and 0.02% Sodium Azide.
Isotype	IgG
Storage Instruction	Store at -20°C for up to 1 year from the date of receipt, and avoid repeat freeze-thaw cycles.

TARGET INFORMATION

Gene ID	92922
Gene Symbol	CCDC102A
Uniprot ID	C102A_HUMAN
Immunogen	The antiserum was produced against synthesized peptide derived from human CCDC102A at amino acid range 341-390
Immunogen Region	310-390 Internal
Specificity	CCDC102A polyclonal antibody (Coiled-Coil Domain-Containing Protein 102a) binds to endogenous Coiled-Coil Domain-Containing Protein 102a at the amino acid region 310-390 Internal.
Immunogen Sequence	



Western blot analysis of the lysates from HepG2 cells using CCDC102A antibody.



Western blot analysis of lysates from LOVO cells, using CCDC102A Antibody. The lane on the right is blocked with the synthesized peptide.

This product is suitable for in-vitro studies under the RESEARCH USE ONLY [RUO] licence. This product must not be used as for diagnostic or other medical purposes.
St John's Laboratory Ltd, Knowledge Dock Business Centre, University Way, London, E16 2RD | Tel: 0208 223 3081