

Anti-NCBP2 antibody (10-90 N-Term) (STJ92061)

STJ92061

GENERAL INFORMATION

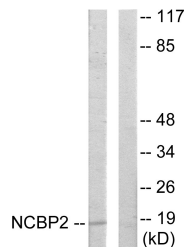
Product Type	Primary antibodies
Short Description	Rabbit polyclonal antibody anti-Nuclear Cap-Binding Protein Subunit 2 (10-90 N-Term) is suitable for use in Western Blot, Immunohistochemistry, Immunofluorescence, Immunocytochemistry and ELISA research applications.
Applications	WB, IHC-P, IF, ICC, ELISA
Host/Source	Rabbit
Reactivity	Human, Mouse

PRODUCT PROPERTIES

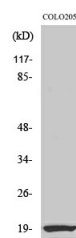
Clonality	Polyclonal
Clone ID	
Concentration	1 mg/mL
Conjugation	Unconjugated
Purification	The antibody was affinity-purified from rabbit anti-serum by affinity-chromatography.
Dilution Range	WB 1:500-1:2000 IHC 1:100-1:300 IF 1:200-1:1000 ELISA 1:5000
Formulation	PBS, 50% Glycerol, 0.5% BSA and 0.02% Sodium Azide.
Isotype	IgG
Storage Instruction	Store at -20°C for up to 1 year from the date of receipt, and avoid repeat freeze-thaw cycles.

TARGET INFORMATION

Gene ID	22916
Gene Symbol	NCBP2
Uniprot ID	NCBP2_HUMAN
Immunogen	The antiserum was produced against synthesized peptide derived from human NCBP2 at amino acid range 10-59
Immunogen Region	10-90 N-Term
Specificity	NCBP2 polyclonal antibody (Nuclear Cap-Binding Protein Subunit 2) binds to endogenous Nuclear Cap-Binding Protein Subunit 2 at the amino acid region 10-90 N-Term.
Immunogen Sequence	



Western blot analysis of lysates from COLO205 cells, using NCBP2 Antibody. The lane on the right is blocked with the synthesized peptide.



Western blot analysis of various cells using CBP20 Polyclonal Antibody

This product is suitable for in-vitro studies under the RESEARCH USE ONLY [RUO] licence. This product must not be used as for diagnostic or other medical purposes.
St John's Laboratory Ltd, Knowledge Dock Business Centre, University Way, London, E16 2RD | Tel: 0208 223 3081