

Anti-CREBBP antibody (1480-1550) (STJ92058)

STJ92058

GENERAL INFORMATION

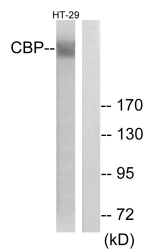
Product Type	Primary antibodies
Short Description	Rabbit polyclonal antibody anti-Creb-Binding Protein (1480-1550) is suitable for use in Western Blot, Immunohistochemistry, Immunofluorescence, Immunocytochemistry and ELISA research applications.
Applications	WB, IHC-P, IF, ICC, ELISA
Host/Source	Rabbit
Reactivity	Human, Mouse, Rat

PRODUCT PROPERTIES

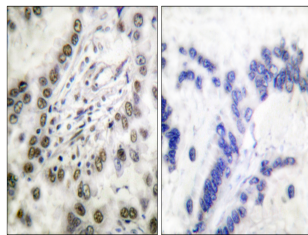
Clonality	Polyclonal
Clone ID	
Concentration	1 mg/mL
Conjugation	Unconjugated
Purification	The antibody was affinity-purified from rabbit anti-serum by affinity-chromatography.
Dilution Range	WB 1:500-1:2000 IHC 1:100-1:300 IF 1:200-1:1000 ELISA 1:20000
Formulation	PBS, 50% Glycerol, 0.5% BSA and 0.02% Sodium Azide.
Isotype	IgG
Storage Instruction	Store at -20°C for up to 1 year from the date of receipt, and avoid repeat freeze-thaw cycles.

TARGET INFORMATION

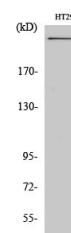
Gene ID	1387
Gene Symbol	CREBBP
Uniprot ID	CBP_HUMAN
Immunogen	The antiserum was produced against synthesized peptide derived from human CBP at amino acid range 1501-1550
Immunogen Region	1480-1550
Specificity	CREBBP polyclonal antibody (Creb-Binding Protein) binds to endogenous Creb-Binding Protein at the amino acid region 1480-1550.
Immunogen Sequence	



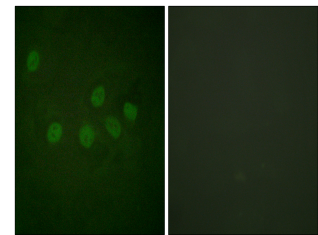
Western blot analysis of lysates from HT-29 cells, treated with calyculinA 50ng/ml 30', using CBP Antibody. The lane on the right is blocked with the synthesized peptide.



Immunohistochemistry analysis of paraffin-embedded human lung carcinoma tissue, using CBP Antibody. The picture on the right is blocked with the synthesized peptide.



Western blot analysis of HT29 cells using CBP Polyclonal Antibody diluted at 1: 1000



Immunofluorescence analysis of HeLa cells, using CBP Antibody. The picture on the right is blocked with the synthesized peptide.

This product is suitable for in-vitro studies under the RESEARCH USE ONLY [RUO] licence. This product must not be used as for diagnostic or other medical purposes.
St John's Laboratory Ltd, Knowledge Dock Business Centre, University Way, London, E16 2RD | Tel: 0208 223 3081