

Anti-GBA3 antibody (260-340 Internal) (STJ92054)

STJ92054

GENERAL INFORMATION

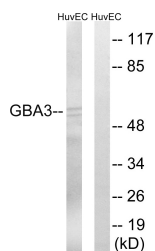
Product Type	Primary antibodies
Short Description	Rabbit polyclonal antibody anti-Cytosolic Beta-Glucosidase (260-340 Internal) is suitable for use in Western Blot and ELISA research applications.
Applications	WB, ELISA
Host/Source	Rabbit
Reactivity	Human, Rat, Mouse

PRODUCT PROPERTIES

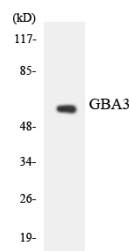
Clonality	Polyclonal
Clone ID	
Concentration	1 mg/mL
Conjugation	Unconjugated
Purification	The antibody was affinity-purified from rabbit anti-serum by affinity-chromatography.
Dilution Range	WB 1:500-1:2000 ELISA 1:20000
Formulation	PBS, 50% Glycerol, 0.5% BSA and 0.02% Sodium Azide.
Isotype	IgG
Storage	Store at -20°C for up to 1 year from the date of receipt, and avoid repeat freeze-thaw cycles.
Instruction	

TARGET INFORMATION

Gene ID	57733
Gene Symbol	GBA3
Uniprot ID	GBA3_HUMAN
Immunogen	The antiserum was produced against synthesized peptide derived from human GBA3 at amino acid range 291-340
Immunogen Region	260-340 Internal
Specificity	GBA3 polyclonal antibody (Cytosolic Beta-Glucosidase) binds to endogenous Cytosolic Beta-Glucosidase at the amino acid region 260-340 Internal.
Immunogen Sequence	



Western blot analysis of lysates from HUVEC cells, using GBA3 Antibody. The lane on the right is blocked with the synthesized peptide.



Western blot analysis of the lysates from HeLa cells using GBA3 antibody.



Western blot analysis of various cells using CBG Polyclonal Antibody diluted at 1: 500

This product is suitable for in-vitro studies under the RESEARCH USE ONLY [RUO] licence. This product must not be used as for diagnostic or other medical purposes.
St John's Laboratory Ltd, Knowledge Dock Business Centre, University Way, London, E16 2RD | Tel: 0208 223 3081