

Anti-CTSD antibody (Internal) (STJ92046)

STJ92046

GENERAL INFORMATION

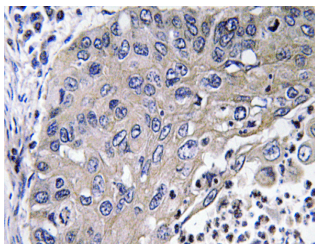
Product Type	Primary antibodies
Short Description	Rabbit polyclonal antibody anti-Cathepsin D Cleaved Into-Cathepsin D Light Chain-Cathepsin D Heavy Chain (Internal) is suitable for use in Western Blot, Immunohistochemistry, Immunofluorescence and ELISA research applications.
Applications	WB, IHC-P, IF-P, ELISA
Host/Source	Rabbit
Reactivity	Human, Rat, Mouse

PRODUCT PROPERTIES

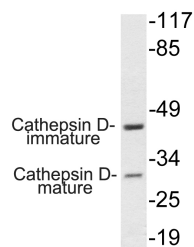
Clonality	Polyclonal
Clone ID	
Concentration	1 mg/mL
Conjugation	Unconjugated
Purification	The antibody was affinity-purified from rabbit anti-serum by affinity-chromatography.
Dilution Range	WB 1:500-1:2000 IHC 1:100-1:300 ELISA 1:40000
Formulation	PBS, 50% Glycerol, 0.5% BSA and 0.02% Sodium Azide.
Isotype	IgG
Storage Instruction	Store at -20°C for up to 1 year from the date of receipt, and avoid repeat freeze-thaw cycles.

TARGET INFORMATION

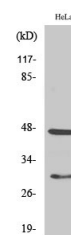
Gene ID	1509
Gene Symbol	CTSD
Uniprot ID	CATD_HUMAN
Immunogen	The antiserum was produced against synthesized peptide derived from human Cathepsin D at amino acid range 296-345
Immunogen Region	Internal
Specificity	CTSD polyclonal antibody (Cathepsin D Cleaved Into-Cathepsin D Light Chain-Cathepsin D Heavy Chain) binds to endogenous Cathepsin D Cleaved Into-Cathepsin D Light Chain-Cathepsin D Heavy Chain at the amino acid region Internal.
Immunogen Sequence	



Immunohistochemistry analysis of Cathepsin D antibody in paraffin-embedded human lung carcinoma tissue.



Western blot analysis of lysate from HepG2 cells, using Cathepsin D antibody.



Western blot analysis of various cells using Cathepsin D Polyclonal Antibody

This product is suitable for in-vitro studies under the RESEARCH USE ONLY [RUO] licence. This product must not be used as for diagnostic or other medical purposes.
St John's Laboratory Ltd, Knowledge Dock Business Centre, University Way, London, E16 2RD | Tel: 0208 223 3081