

Anti-CTSD antibody (Internal) (STJ92045)

STJ92045

GENERAL INFORMATION

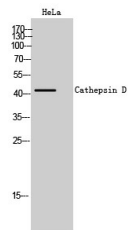
Product Type	Primary antibodies
Short Description	Rabbit polyclonal antibody anti-Cathepsin D Cleaved Into-Cathepsin D Light Chain-Cathepsin D Heavy Chain (Internal) is suitable for use in Western Blot, Immunohistochemistry, Immunofluorescence and ELISA research applications.
Applications	WB, IHC-P, IF-P, ELISA
Host/Source	Rabbit
Reactivity	Human, Mouse

PRODUCT PROPERTIES

Clonality	Polyclonal
Clone ID	
Concentration	1 mg/mL
Conjugation	Unconjugated
Purification	The antibody was affinity-purified from rabbit anti-serum by affinity-chromatography.
Dilution	WB 1:500-1:2000
Range	IHC 1:100-1:300 ELISA 1:5000
Formulation	PBS, 50% Glycerol, 0.5% BSA and 0.02% Sodium Azide.
Isotype	IgG
Storage Instruction	Store at -20°C for up to 1 year from the date of receipt, and avoid repeat freeze-thaw cycles.

TARGET INFORMATION

Gene ID	1509
Gene Symbol	CTSD
Uniprot ID	CATD_HUMAN
Immunogen	Synthesized peptide derived from the Internal region of human Cathepsin D.
Immunogen Region	Internal
Specificity	CTSD polyclonal antibody (Cathepsin D Cleaved Into-Cathepsin D Light Chain-Cathepsin D Heavy Chain) binds to endogenous Cathepsin D Cleaved Into-Cathepsin D Light Chain-Cathepsin D Heavy Chain at the amino acid region Internal.
Immunogen Sequence	



Western blot analysis of HeLa cells using Cathepsin D Polyclonal Antibody

This product is suitable for in-vitro studies under the RESEARCH USE ONLY [RUO] licence. This product must not be used as for diagnostic or other medical purposes.
St John's Laboratory Ltd, Knowledge Dock Business Centre, University Way, London, E16 2RD | Tel: 0208 223 3081