

Anti-CTNNB1 antibody (590-670) (STJ92037)

STJ92037

GENERAL INFORMATION

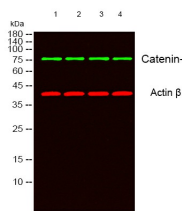
Product Type	Primary antibodies
Short Description	Rabbit polyclonal antibody anti-Catenin Beta-1 (590-670) is suitable for use in Western Blot, Immunohistochemistry, Immunofluorescence, Immunocytochemistry and ELISA research applications.
Applications	WB, IHC-P, IF, ICC, ELISA
Host/Source	Rabbit
Reactivity	Human, Mouse, Rat

PRODUCT PROPERTIES

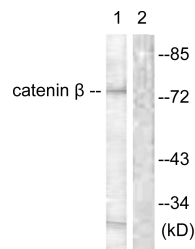
Clonality	Polyclonal
Clone ID	
Concentration	1 mg/mL
Conjugation	Unconjugated
Purification	The antibody was affinity-purified from rabbit anti-serum by affinity-chromatography.
Dilution Range	WB 1:500-1:2000 IHC 1:100-1:300 IF 1:200-1:1000 ELISA 1:40000
Formulation	PBS, 50% Glycerol, 0.5% BSA and 0.02% Sodium Azide.
Isotype	IgG
Storage Instruction	Store at -20°C for up to 1 year from the date of receipt, and avoid repeat freeze-thaw cycles.

TARGET INFORMATION

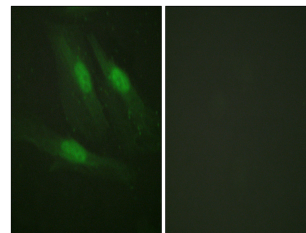
Gene ID	1499
Gene Symbol	CTNNB1
Uniprot ID	CTNB1_HUMAN
Immunogen	The antiserum was produced against synthesized peptide derived from human Catenin-beta at amino acid range 620-669
Immunogen Region	590-670
Specificity	CTNNB1 polyclonal antibody (Catenin Beta-1) binds to endogenous Catenin Beta-1 at the amino acid region 590-670.
Immunogen Sequence	



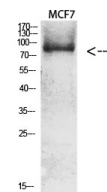
Western blot analysis of lysates from 1) 293T, 2) AD293, 3) HELA, 4) HEPG2 cells. (Green) primary antibody was diluted at 1:1000, 4°C over night, secondary antibody (cat: NA) was diluted at 1:10000, 37°C 1hour. (Red) Actin Beta monoclonal antibody (5B7) (cat: STJ96930) antibody was diluted at 1:5000 as loading control, 4°C over night, secondary antibody (cat: NA) was diluted at 1:10000, 37°C 1hour.



Western blot analysis of lysates from rat brain cells, using Catenin-beta Antibody. The lane on the right is blocked with the synthesized peptide.



Immunofluorescence analysis of HeLa cells, using Catenin-beta Antibody. The picture on the right is blocked with the synthesized peptide.



Western blot analysis of MCF7 Lysate, antibody was diluted at 1:1000. Secondary antibody was diluted at 1:20000