

Anti-CASP9 antibody (90-170) (STJ92026)

STJ92026

GENERAL INFORMATION

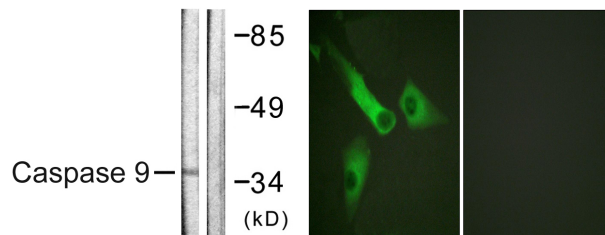
Product Type	Primary antibodies
Short Description	Rabbit polyclonal antibody anti-Caspase-9 (90-170) is suitable for use in Western Blot, Immunohistochemistry, Immunofluorescence, Immunocytochemistry and ELISA research applications.
Applications	WB, IHC-P, IF, ICC, ELISA
Host/Source	Rabbit
Reactivity	Human, Monkey

PRODUCT PROPERTIES

Clonality	Polyclonal
Clone ID	
Concentration	1 mg/mL
Conjugation	Unconjugated
Purification	The antibody was affinity-purified from rabbit anti-serum by affinity-chromatography.
Dilution Range	WB 1:500-1:2000 IHC 1:100-1:300 IF 1:200-1:1000 ELISA 1:5000
Formulation	PBS, 50% Glycerol, 0.5% BSA and 0.02% Sodium Azide.
Isotype	IgG
Storage Instruction	Store at -20°C for up to 1 year from the date of receipt, and avoid repeat freeze-thaw cycles.

TARGET INFORMATION

Gene ID	842
Gene Symbol	CASP9
Uniprot ID	CASP9_HUMAN
Immunogen	The antiserum was produced against synthesized peptide derived from human Caspase 9 at amino acid range 119-168
Immunogen Region	90-170
Specificity	CASP9 polyclonal antibody (Caspase-9) binds to endogenous Caspase-9 at the amino acid region 90-170.
Immunogen Sequence	



Western blot analysis of lysates from HeLa cells, treated with EGF 200ng/ml 30', using Caspase 9 Antibody. The lane on the right is blocked with the synthesized peptide.

Immunofluorescence analysis of HeLa cells, using Caspase 9 Antibody. The picture on the right is blocked with the synthesized peptide.