

Anti-CASP2 antibody (100-180) (STJ92020)

STJ92020

GENERAL INFORMATION

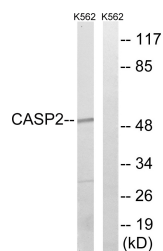
Product Type	Primary antibodies
Short Description	Rabbit polyclonal antibody anti-Caspase-2 (100-180) is suitable for use in Western Blot, Immunohistochemistry, Immunofluorescence and ELISA research applications.
Applications	WB, IHC-P, IF-P, ELISA
Host/Source	Rabbit
Reactivity	Human, Rat, Mouse

PRODUCT PROPERTIES

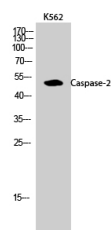
Clonality	Polyclonal
Clone ID	
Concentration	1 mg/mL
Conjugation	Unconjugated
Purification	The antibody was affinity-purified from rabbit anti-serum by affinity-chromatography.
Dilution Range	WB 1:500-1:2000 IHC 1:100-1:300 ELISA 1:10000
Formulation	PBS, 50% Glycerol, 0.5% BSA and 0.02% Sodium Azide.
Isotype	IgG
Storage Instruction	Store at -20°C for up to 1 year from the date of receipt, and avoid repeat freeze-thaw cycles.

TARGET INFORMATION

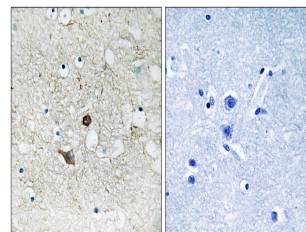
Gene ID	835
Gene Symbol	CASP2
Uniprot ID	CASP2_HUMAN
Immunogen	The antiserum was produced against synthesized peptide derived from human Caspase 2 at amino acid range 123-172
Immunogen Region	100-180
Specificity	CASP2 polyclonal antibody (Caspase-2) binds to endogenous Caspase-2 at the amino acid region 100-180.
Immunogen Sequence	



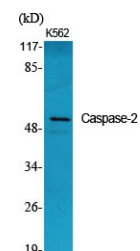
Western blot analysis of lysates from K562, using Caspase 2 Antibody. The lane on the right is blocked with the synthesized peptide.



Western blot analysis of K562 cells using Caspase-2 Polyclonal Antibody



Immunohistochemistry analysis of paraffin-embedded human lung carcinoma tissue, using Caspase 2 Antibody. The picture on the right is blocked with the synthesized peptide.



Western blot analysis of various cells using Caspase-2 Polyclonal Antibody

This product is suitable for in-vitro studies under the RESEARCH USE ONLY [RUO] licence. This product must not be used as for diagnostic or other medical purposes.
St John's Laboratory Ltd, Knowledge Dock Business Centre, University Way, London, E16 2RD | Tel: 0208 223 3081