

## Anti-Casein Kinase I Gamma 1/2/3 antibody (200-280) (STJ92013)

STJ92013

### GENERAL INFORMATION

<b>Product Type</b>	Primary antibodies
<b>Short Description</b>	Rabbit polyclonal antibody anti-Casein kinase I isoform gamma-1 and Casein kinase I isoform gamma-2 and Casein kinase I isoform gamma-3 (200-280) is suitable for use in Immunohistochemistry, Immunofluorescence and ELISA research applications.
<b>Applications</b>	IHC-P, IF-P, ELISA
<b>Host/Source</b>	Rabbit
<b>Reactivity</b>	Human, Mouse, Rat

### PRODUCT PROPERTIES

<b>Clonality</b>	Polyclonal
<b>Clone ID</b>	
<b>Concentration</b>	1 mg/mL
<b>Conjugation</b>	Unconjugated
<b>Purification</b>	The antibody was affinity-purified from rabbit anti-serum by affinity-chromatography.
<b>Dilution</b>	IHC 1:100-1:300
<b>Range</b>	ELISA 1:40000
<b>Formulation</b>	PBS, 50% Glycerol, 0.5% BSA and 0.02% Sodium Azide.
<b>Isotype</b>	IgG
<b>Storage</b>	Store at -20°C for up to 1 year from the date of receipt, and avoid repeat freeze-thaw cycles.
<b>Instruction</b>	

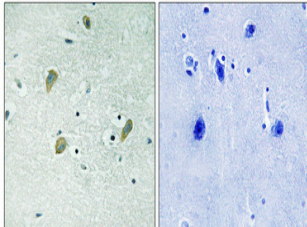
### TARGET INFORMATION

**Gene ID** [1456](#)  
[1455](#)  
[53944](#)  
[CSNK1G3](#)  
[CSNK1G2](#)  
[KC1G3\\_HUMAN](#)  
[KC1G2\\_HUMAN](#)  
[KC1G1\\_HUMAN](#)

**Immunogen** The antiserum was produced against synthesized peptide derived from human CK-1gamma1/2/3 at amino acid range 229-278  
**Immunogen Region** 200-280

**Specificity** Casein Kinase I Gamma 1/2/3 polyclonal antibody (Casein kinase I isoform gamma-1 and Casein kinase I isoform gamma-2 and Casein kinase I isoform gamma-3) binds to endogenous Casein kinase I isoform gamma-1 and Casein kinase I isoform gamma-2 and Case

**Immunogen Sequence**



Immunohistochemical analysis of paraffin-embedded Human brain. Antibody was diluted at 1:100 (4°C overnight). High-pressure and temperature Tris-EDTA, pH8.0 was used for antigen retrieval. Negative control (right) obtained from antibody was pre-absorbed by immunogen peptide.

This product is suitable for in-vitro studies under the RESEARCH USE ONLY [RUO] licence. This product must not be used as for diagnostic or other medical purposes.  
 St John's Laboratory Ltd, Knowledge Dock Business Centre, University Way, London, E16 2RD | Tel: 0208 223 3081