

Anti-CSNK1G1 antibody (1-80 N-Term) (STJ92012)

STJ92012

GENERAL INFORMATION

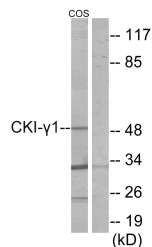
Product Type	Primary antibodies
Short Description	Rabbit polyclonal antibody anti-Casein Kinase I Isoform Gamma-1 (1-80 N-Term) is suitable for use in Western Blot, Immunohistochemistry, Immunofluorescence, Immunocytochemistry and ELISA research applications.
Applications	WB, IHC-P, IF, ICC, ELISA
Host/Source	Rabbit
Reactivity	Human, Mouse, Rat, Monkey

PRODUCT PROPERTIES

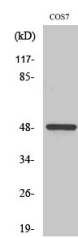
Clonality	Polyclonal
Clone ID	
Concentration	1 mg/mL
Conjugation	Unconjugated
Purification	The antibody was affinity-purified from rabbit anti-serum by affinity-chromatography.
Dilution Range	WB 1:500-1:2000 IHC 1:100-1:300 IF 1:200-1:1000 ELISA 1:20000
Formulation	PBS, 50% Glycerol, 0.5% BSA and 0.02% Sodium Azide.
Isotype	IgG
Storage Instruction	Store at -20°C for up to 1 year from the date of receipt, and avoid repeat freeze-thaw cycles.

TARGET INFORMATION

Gene ID	53944
Gene Symbol	CSNK1G1
Uniprot ID	KC1G1_HUMAN
Immunogen	The antiserum was produced against synthesized peptide derived from human CKI-gamma1 at amino acid range 1-50
Immunogen Region	1-80 N-Term
Specificity	CSNK1G1 polyclonal antibody (Casein Kinase I Isoform Gamma-1) binds to endogenous Casein Kinase I Isoform Gamma-1 at the amino acid region 1-80 N-Term.
Immunogen Sequence	



Western blot analysis of lysates from COS7 cells, using CKI-gamma1 Antibody. The lane on the right is blocked with the synthesized peptide.



Western blot analysis of various cells using Casein Kinase I Gamma 1 Polyclonal Antibody

This product is suitable for in-vitro studies under the RESEARCH USE ONLY [RUO] licence. This product must not be used as for diagnostic or other medical purposes.
St John's Laboratory Ltd, Knowledge Dock Business Centre, University Way, London, E16 2RD | Tel: 0208 223 3081