

Anti-CSNK2A1 antibody (190-270) (STJ92008)

STJ92008

GENERAL INFORMATION

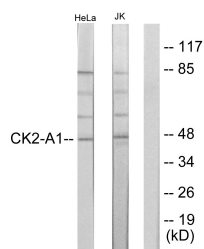
Product Type	Primary antibodies
Short Description	Rabbit polyclonal antibody anti-Casein Kinase II Subunit Alpha (190-270) is suitable for use in Western Blot, Immunohistochemistry, Immunofluorescence and ELISA research applications.
Applications	WB, IHC-P, IF-P, ELISA
Host/Source	Rabbit
Reactivity	Human, Mouse, Rat

PRODUCT PROPERTIES

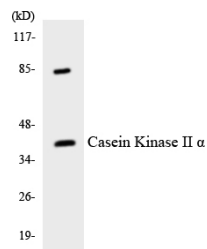
Clonality	Polyclonal
Clone ID	
Concentration	1 mg/mL
Conjugation	Unconjugated
Purification	The antibody was affinity-purified from rabbit anti-serum by affinity-chromatography.
Dilution Range	WB 1:500-1:2000 IHC 1:100-1:300 ELISA 1:10000
Formulation	PBS, 50% Glycerol, 0.5% BSA and 0.02% Sodium Azide.
Isotype	IgG
Storage Instruction	Store at -20°C for up to 1 year from the date of receipt, and avoid repeat freeze-thaw cycles.

TARGET INFORMATION

Gene ID	1457
Gene Symbol	CSNK2A1
Uniprot ID	CSK21_HUMAN
Immunogen	The antiserum was produced against synthesized peptide derived from human Casein Kinase II alpha at amino acid range 221-270
Immunogen Region	190-270
Specificity	CSNK2A1 polyclonal antibody (Casein Kinase II Subunit Alpha) binds to endogenous Casein Kinase II Subunit Alpha at the amino acid region 190-270.
Immunogen Sequence	



Western blot analysis of lysates from HeLa and Jurkat cells, using Casein Kinase II alpha Antibody. The lane on the right is blocked with the synthesized peptide.



Western blot analysis of the lysates from 293 cells using Casein Kinase II Alpha antibody.



Western blot analysis of various cells using Casein Kinase II Alpha Polyclonal Antibody cells nucleus extracted by Minute™ Cytoplasmic and Nuclear Fractionation kit (SC-003, Inventibiotec, MN, USA).

This product is suitable for in-vitro studies under the RESEARCH USE ONLY [RUO] licence. This product must not be used as for diagnostic or other medical purposes.
St John's Laboratory Ltd, Knowledge Dock Business Centre, University Way, London, E16 2RD | Tel: 0208 223 3081