

## Anti-Casein Kinase I Alpha 1/1L antibody (110-190 Internal) (STJ92007)

STJ92007

### GENERAL INFORMATION

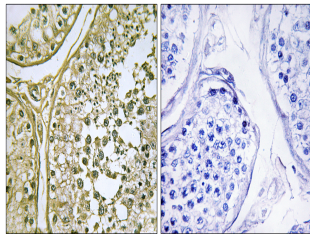
<b>Product Type</b>	Primary antibodies
<b>Short Description</b>	Rabbit polyclonal antibody anti-Casein kinase I isoform alpha-like and Casein kinase I isoform alpha (110-190 Internal) is suitable for use in Immunohistochemistry, Immunofluorescence, Immunocytochemistry, Western Blot and ELISA research applications
<b>Applications</b>	IHC-P, IF, ICC, WB, ELISA
<b>Host/Source</b>	Rabbit
<b>Reactivity</b>	Human, Mouse, Rat

### PRODUCT PROPERTIES

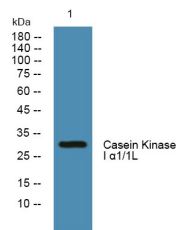
<b>Clonality</b>	Polyclonal
<b>Clone ID</b>	
<b>Concentration</b>	1 mg/mL
<b>Conjugation</b>	Unconjugated
<b>Purification</b>	The antibody was affinity-purified from rabbit anti-serum by affinity-chromatography.
<b>Dilution Range</b>	WB 1:500-2000 IHC 1:100-1:300 IF 1:200-1:1000 ELISA 1:20000
<b>Formulation</b>	PBS, 50% Glycerol, 0.5% BSA and 0.02% Sodium Azide.
<b>Isotype</b>	IgG
<b>Storage Instruction</b>	Store at -20°C for up to 1 year from the date of receipt, and avoid repeat freeze-thaw cycles.

### TARGET INFORMATION

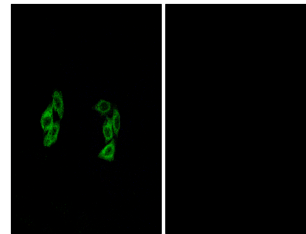
<b>Gene ID</b>	122011 1452
<b>Gene Symbol</b>	CSNK1A1L CSNK1A1
<b>Uniprot ID</b>	KC1AL_HUMAN KC1A_HUMAN
<b>Immunogen</b>	The antiserum was produced against synthesized peptide derived from human CKI-alpha1/L at amino acid range 141-190
<b>Immunogen Region</b>	110-190 Internal
<b>Specificity</b>	Casein Kinase I Alpha 1/1L polyclonal antibody (Casein kinase I isoform alpha-like and Casein kinase I isoform alpha) binds to endogenous Casein kinase I isoform alpha-like and Casein kinase I isoform alpha at the amino acid region 110-190 Internal.
<b>Immunogen Sequence</b>	



Immunohistochemistry analysis of paraffin-embedded human testis tissue, using CKI-alpha1/L Antibody. The picture on the right is blocked with the synthesized peptide.



Western blot analysis of lysates from SH-SY5Y cells, primary antibody was diluted at 1:1000, 4°C over night



Immunofluorescence analysis of A549 cells, using CKI-alpha1/L Antibody. The picture on the right is blocked with the synthesized peptide.

This product is suitable for in-vitro studies under the RESEARCH USE ONLY [RUO] licence. This product must not be used as for diagnostic or other medical purposes.  
St John's Laboratory Ltd, Knowledge Dock Business Centre, University Way, London, E16 2RD | Tel: 0208 223 3081