

Anti-CSE1L antibody (1-80 N-Term) (STJ92006)

STJ92006

GENERAL INFORMATION

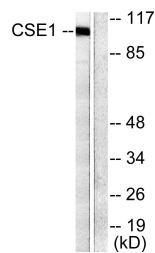
Product Type	Primary antibodies
Short Description	Rabbit polyclonal antibody anti-Exportin-2 (1-80 N-Term) is suitable for use in Western Blot, Immunohistochemistry, Immunoprecipitation, Immunofluorescence, Immunocytochemistry and ELISA research applications.
Applications	WB, IHC-P, IP, IF, ICC, ELISA
Host/Source	Rabbit
Reactivity	Human, Rat, Mouse

PRODUCT PROPERTIES

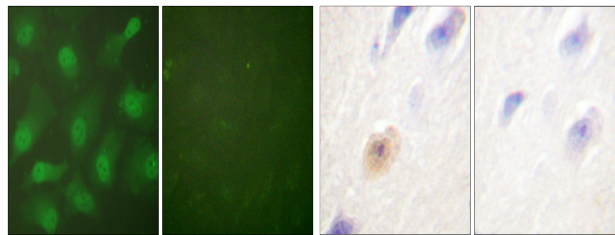
Clonality	Polyclonal
Clone ID	
Concentration	1 mg/mL
Conjugation	Unconjugated
Purification	The antibody was affinity-purified from rabbit anti-serum by affinity-chromatography.
Dilution Range	WB 1:500-1:2000 IHC 1:100-1:300 IP 2-5 ug/mg IF 1:200-1:1000 ELISA 1:40000
Formulation	PBS, 50% Glycerol, 0.5% BSA and 0.02% Sodium Azide.
Isotype	IgG
Storage Instruction	Store at -20°C for up to 1 year from the date of receipt, and avoid repeat freeze-thaw cycles.

TARGET INFORMATION

Gene ID	1434
Gene Symbol	CSE1L
Uniprot ID	XPO2_HUMAN
Immunogen	The antiserum was produced against synthesized peptide derived from human CSE1L at amino acid range 1-50
Immunogen Region	1-80 N-Term
Specificity	CSE1L polyclonal antibody (Exportin-2) binds to endogenous Exportin-2 at the amino acid region 1-80 N-Term.
Immunogen Sequence	

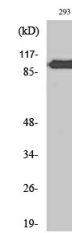


Western blot analysis of lysates from 293 cells, using CSE1L Antibody. The lane on the right is blocked with the synthesized peptide.



Immunofluorescence analysis of HeLa cells, using CSE1L Antibody. The picture on the right is blocked with the synthesized peptide.

Immunohistochemistry analysis of paraffin-embedded human brain tissue, using CSE1L Antibody. The picture on the right is blocked with the synthesized peptide.



Western blot analysis of various cells using CAS Polyclonal Antibody diluted at 1:2000

This product is suitable for in-vitro studies under the RESEARCH USE ONLY [RUO] licence. This product must not be used as for diagnostic or other medical purposes.
St John's Laboratory Ltd, Knowledge Dock Business Centre, University Way, London, E16 2RD | Tel: 0208 223 3081