

Anti-ANKRD1 antibody (200-280 C-Term) (STJ92005)

STJ92005

GENERAL INFORMATION

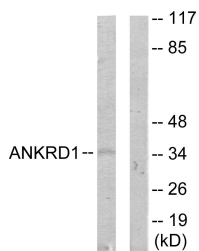
Product Type	Primary antibodies
Short Description	Rabbit polyclonal antibody anti-Ankyrin Repeat Domain-Containing Protein 1 (200-280 C-Term) is suitable for use in Western Blot, Immunohistochemistry, Immunofluorescence and ELISA research applications.
Applications	WB, IHC-P, IF-P, ELISA
Host/Source	Rabbit
Reactivity	Human, Mouse, Rat

PRODUCT PROPERTIES

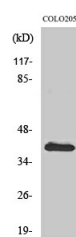
Clonality	Polyclonal
Clone ID	
Concentration	1 mg/mL
Conjugation	Unconjugated
Purification	The antibody was affinity-purified from rabbit anti-serum by affinity-chromatography.
Dilution Range	WB 1:500-1:2000 IHC 1:100-1:300 ELISA 1:20000
Formulation	PBS, 50% Glycerol, 0.5% BSA and 0.02% Sodium Azide.
Isotype	IgG
Storage Instruction	Store at 20°C for up to 1 year from the date of receipt, and avoid repeat freeze-thaw cycles.

TARGET INFORMATION

Gene ID	27063
Gene Symbol	ANKRD1
Uniprot ID	ANKR1_HUMAN
Immunogen	The antiserum was produced against synthesized peptide derived from human ANKRD1 at amino acid range 231-280
Immunogen Region	200-280 C-Term
Specificity	ANKRD1 polyclonal antibody (Ankyrin Repeat Domain-Containing Protein 1) binds to endogenous Ankyrin Repeat Domain-Containing Protein 1 at the amino acid region 200-280 C-Term.
Immunogen Sequence	



Western blot analysis of lysates from COL0205 cells, using ANKRD1 Antibody. The lane on the right is blocked with the synthesized peptide.



Western blot analysis of various cells using CARP Polyclonal Antibody

This product is suitable for in-vitro studies under the RESEARCH USE ONLY [RUO] licence. This product must not be used as for diagnostic or other medical purposes.
St John's Laboratory Ltd, Knowledge Dock Business Centre, University Way, London, E16 2RD | Tel: 0208 223 3081