

Anti-CTF1 antibody (N-Term) (STJ92003)

STJ92003

GENERAL INFORMATION

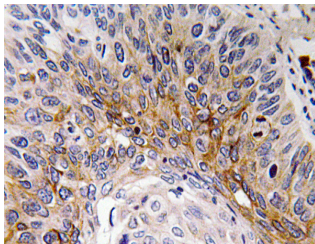
Product Type	Primary antibodies
Short Description	Rabbit polyclonal antibody anti-Cardiotrophin-1 (N-Term) is suitable for use in Western Blot, Immunohistochemistry, Immunofluorescence and ELISA research applications.
Applications	WB, IHC-P, IF-P, ELISA
Host/Source	Rabbit
Reactivity	Human, Mouse, Rat

PRODUCT PROPERTIES

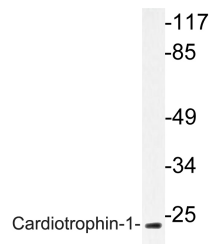
Clonality	Polyclonal
Clone ID	
Concentration	1 mg/mL
Conjugation	Unconjugated
Purification	The antibody was affinity-purified from rabbit anti-serum by affinity-chromatography.
Dilution Range	WB 1:500-1:2000 IHC 1:100-1:300 ELISA 1:40000
Formulation	PBS, 50% Glycerol, 0.5% BSA and 0.02% Sodium Azide.
Isotype	IgG
Storage Instruction	Store at -20°C for up to 1 year from the date of receipt, and avoid repeat freeze-thaw cycles.

TARGET INFORMATION

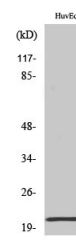
Gene ID	1489
Gene Symbol	CTF1
Uniprot ID	CTF1_HUMAN
Immunogen	The antiserum was produced against synthesized peptide derived from human Cardiotrophin-1 at amino acid range 31-80
Immunogen Region	N-Term
Specificity	CTF1 polyclonal antibody (Cardiotrophin-1) binds to endogenous Cardiotrophin-1 at the amino acid region N-Term.
Immunogen Sequence	



Immunohistochemistry analysis of Cardiotrophin-1 antibody in paraffin-embedded human lung carcinoma tissue.



Western blot analysis of lysate from HUVEC cells, using Cardiotrophin-1 antibody.



Western blot analysis of various cells using Cardiotrophin-1 Polyclonal Antibody