

Anti-CARD14 antibody (260-340 Internal) (STJ92001)

STJ92001

GENERAL INFORMATION

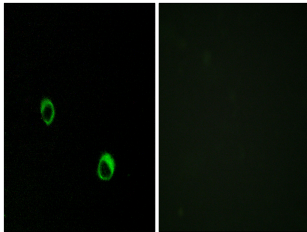
Product Type	Primary antibodies
Short Description	Rabbit polyclonal antibody anti-Caspase Recruitment Domain-Containing Protein 14 (260-340 Internal) is suitable for use in Immunohistochemistry, Immunofluorescence, Immunocytochemistry and ELISA research applications.
Applications	IHC-P, IF, ICC, ELISA
Host/Source	Rabbit
Reactivity	Human, Mouse

PRODUCT PROPERTIES

Clonality	Polyclonal
Clone ID	
Concentration	1 mg/mL
Conjugation	Unconjugated
Purification	The antibody was affinity-purified from rabbit anti-serum by affinity-chromatography.
Dilution Range	IHC 1:100-1:300 IF 1:200-1:1000 ELISA 1:40000
Formulation	PBS, 50% Glycerol, 0.5% BSA and 0.02% Sodium Azide.
Isotype	IgG
Storage Instruction	Store at -20°C for up to 1 year from the date of receipt, and avoid repeat freeze-thaw cycles.

TARGET INFORMATION

Gene ID	79092
Gene Symbol	CARD14
Uniprot ID	CAR14_HUMAN
Immunogen	The antiserum was produced against synthesized peptide derived from human CAR14 at amino acid range 291-340
Immunogen Region	260-340 Internal
Specificity	CARD14 polyclonal antibody (Caspase Recruitment Domain-Containing Protein 14) binds to endogenous Caspase Recruitment Domain-Containing Protein 14 at the amino acid region 260-340 Internal.
Immunogen Sequence	



Immunofluorescence analysis of MCF7 cells, using CARD14 Antibody. The picture on the right is blocked with the synthesized peptide.