

Anti-CARD10 antibody (450-530 Internal) (STJ91999)

STJ91999

GENERAL INFORMATION

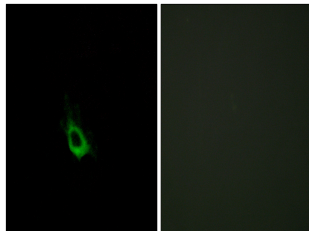
Product Type	Primary antibodies
Short Description	Rabbit polyclonal antibody anti-Caspase Recruitment Domain-Containing Protein 10 (450-530 Internal) is suitable for use in Western Blot, Immunohistochemistry, Immunofluorescence, Immunocytochemistry and ELISA research applications.
Applications	WB, IHC-P, IF, ICC, ELISA
Host/Source	Rabbit
Reactivity	Human, Mouse

PRODUCT PROPERTIES

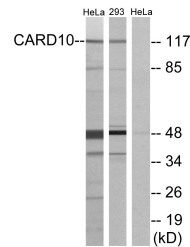
Clonality	Polyclonal
Clone ID	
Concentration	1 mg/mL
Conjugation	Unconjugated
Purification	The antibody was affinity-purified from rabbit anti-serum by affinity-chromatography.
Dilution Range	WB 1:500-1:2000 IHC 1:100-1:300 IF 1:200-1:1000 ELISA 1:10000
Formulation	PBS, 50% Glycerol, 0.5% BSA and 0.02% Sodium Azide.
Isotype	IgG
Storage Instruction	Store at -20°C for up to 1 year from the date of receipt, and avoid repeat freeze-thaw cycles.

TARGET INFORMATION

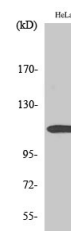
Gene ID	29775
Gene Symbol	CARD10
Uniprot ID	CAR10_HUMAN
Immunogen	The antiserum was produced against synthesized peptide derived from human CARD10 at amino acid range 481-530
Immunogen Region	450-530 Internal
Specificity	CARD10 polyclonal antibody (Caspase Recruitment Domain-Containing Protein 10) binds to endogenous Caspase Recruitment Domain-Containing Protein 10 at the amino acid region 450-530 Internal.
Immunogen Sequence	



Immunofluorescence analysis of HeLa cells, using CARD10 Antibody. The picture on the right is blocked with the synthesized peptide.



Western blot analysis of lysates from HeLa and 293 cells, using CARD10 Antibody. The lane on the right is blocked with the synthesized peptide.



Western blot analysis of various cells using CARD 10 Polyclonal Antibody

This product is suitable for in-vitro studies under the RESEARCH USE ONLY [RUO] licence. This product must not be used as for diagnostic or other medical purposes.
St John's Laboratory Ltd, Knowledge Dock Business Centre, University Way, London, E16 2RD | Tel: 0208 223 3081