

Anti-PNCK antibody (130-210 Internal) (STJ91994)

STJ91994

GENERAL INFORMATION

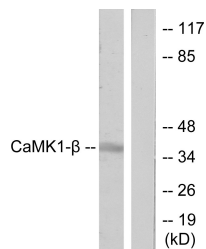
Product Type	Primary antibodies
Short Description	Rabbit polyclonal antibody anti-Calcium/Calmodulin-Dependent Protein Kinase Type 1b (130-210 Internal) is suitable for use in Western Blot, Immunohistochemistry, Immunofluorescence and ELISA research applications.
Applications	WB, IHC-P, IF-P, ELISA
Host/Source	Rabbit
Reactivity	Human, Mouse, Rat

PRODUCT PROPERTIES

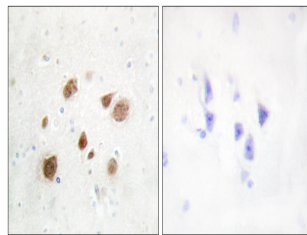
Clonality	Polyclonal
Clone ID	
Concentration	1 mg/mL
Conjugation	Unconjugated
Purification	The antibody was affinity-purified from rabbit anti-serum by affinity-chromatography.
Dilution Range	WB 1:500-1:2000 IHC 1:100-1:300 ELISA 1:10000
Formulation	PBS, 50% Glycerol, 0.5% BSA and 0.02% Sodium Azide.
Isotype	IgG
Storage Instruction	Store at 20°C for up to 1 year from the date of receipt, and avoid repeat freeze-thaw cycles.

TARGET INFORMATION

Gene ID	139728
Gene Symbol	PNCK
Uniprot ID	KCC1B_HUMAN
Immunogen	The antiserum was produced against synthesized peptide derived from human CaMK1-beta at amino acid range 161-210
Immunogen Region	130-210 Internal
Specificity	PNCK polyclonal antibody (Calcium/Calmodulin-Dependent Protein Kinase Type 1b) binds to endogenous Calcium/Calmodulin-Dependent Protein Kinase Type 1b at the amino acid region 130-210 Internal.
Immunogen Sequence	



Western blot analysis of lysates from LOVO cells, treated with H₂O₂ 100uM 30', using CaMK1-beta Antibody. The lane on the right is blocked with the synthesized peptide.



Immunohistochemistry analysis of paraffin-embedded human brain tissue, using CaMK1-beta Antibody. The picture on the right is blocked with the synthesized peptide.