

Anti-CAMK1 antibody (120-200) (STJ91993)

STJ91993

GENERAL INFORMATION

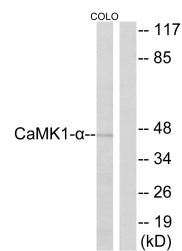
Product Type	Primary antibodies
Short Description	Rabbit polyclonal antibody anti-Calcium/Calmodulin-Dependent Protein Kinase Type 1 (120-200) is suitable for use in Western Blot, Immunohistochemistry, Immunofluorescence and ELISA research applications.
Applications	WB, IHC-P, IF-P, ELISA
Host/Source	Rabbit
Reactivity	Human, Mouse, Rat

PRODUCT PROPERTIES

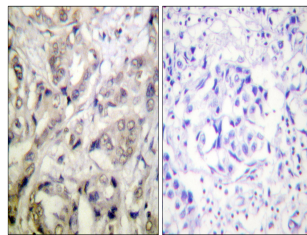
Clonality	Polyclonal
Clone ID	
Concentration	1 mg/mL
Conjugation	Unconjugated
Purification	The antibody was affinity-purified from rabbit anti-serum by affinity-chromatography.
Dilution Range	WB 1:500-1:2000 IHC 1:100-1:300 ELISA 1:20000
Formulation	PBS, 50% Glycerol, 0.5% BSA and 0.02% Sodium Azide.
Isotype	IgG
Storage Instruction	Store at 20°C for up to 1 year from the date of receipt, and avoid repeat freeze-thaw cycles.

TARGET INFORMATION

Gene ID	8536
Gene Symbol	CAMK1
Uniprot ID	KCC1A_HUMAN
Immunogen Region	The antiserum was produced against synthesized peptide derived from human CaMK1-alpha at amino acid range 143-192
Specificity	CaMK1 polyclonal antibody (Calcium/Calmodulin-Dependent Protein Kinase Type 1) binds to endogenous Calcium/Calmodulin-Dependent Protein Kinase Type 1 at the amino acid region 120-200.
Immunogen Sequence	



Western blot analysis of lysates from COLO cells, using CaMK1-alpha Antibody. The lane on the right is blocked with the synthesized peptide.



Immunohistochemistry analysis of paraffin-embedded human breast carcinoma tissue, using CaMK1-alpha Antibody. The picture on the right is blocked with the synthesized peptide.

This product is suitable for in-vitro studies under the RESEARCH USE ONLY [RUO] licence. This product must not be used as for diagnostic or other medical purposes.
St John's Laboratory Ltd, Knowledge Dock Business Centre, University Way, London, E16 2RD | Tel: 0208 223 3081