

Anti-CAMK4 antibody (140-220) (STJ91992)

STJ91992

GENERAL INFORMATION

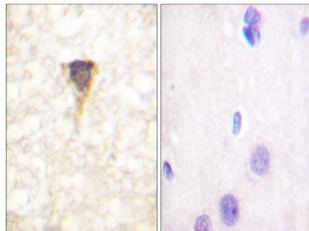
Product Type	Primary antibodies
Short Description	Rabbit polyclonal antibody anti-Calcium/Calmodulin-Dependent Protein Kinase Type Iv (140-220) is suitable for use in Western Blot, Immunohistochemistry, Immunofluorescence, Immunocytochemistry and ELISA research applications.
Applications	WB, IHC-P, IF, ICC, ELISA
Host/Source	Rabbit
Reactivity	Human, Mouse, Rat

PRODUCT PROPERTIES

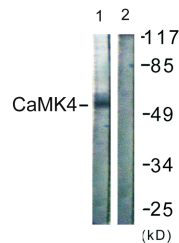
Clonality	Polyclonal
Clone ID	
Concentration	1 mg/mL
Conjugation	Unconjugated
Purification	The antibody was affinity-purified from rabbit anti-serum by affinity-chromatography.
Dilution Range	WB 1:500-1:2000 IHC 1:100-1:300 IF 1:200-1:1000 ELISA 1:5000
Formulation	PBS, 50% Glycerol, 0.5% BSA and 0.02% Sodium Azide.
Isotype	IgG
Storage Instruction	Store at -20°C for up to 1 year from the date of receipt, and avoid repeat freeze-thaw cycles.

TARGET INFORMATION

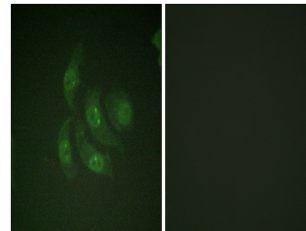
Gene ID	814
Gene Symbol	CAMK4
Uniprot ID	KCC4_HUMAN
Immunogen	The antiserum was produced against synthesized peptide derived from human CaMK4 at amino acid range 166-215
Immunogen Region	140-220
Specificity	CaMK4 polyclonal antibody (Calcium/Calmodulin-Dependent Protein Kinase Type Iv) binds to endogenous Calcium/Calmodulin-Dependent Protein Kinase Type Iv at the amino acid region 140-220.
Immunogen Sequence	



Immunohistochemistry analysis of paraffin-embedded human brain tissue, using CaMK4 Antibody. The picture on the right is blocked with the synthesized peptide.



Western blot analysis of lysates from K562 cells, treated with H₂O₂ 100μM 30', using CaMK4 Antibody. The lane on the right is blocked with the synthesized peptide.



Immunofluorescence analysis of HepG2 cells, using CaMK4 Antibody. The picture on the right is blocked with the synthesized peptide.

This product is suitable for in-vitro studies under the RESEARCH USE ONLY [RUO] licence. This product must not be used as for diagnostic or other medical purposes.
St John's Laboratory Ltd, Knowledge Dock Business Centre, University Way, London, E16 2RD | Tel: 0208 223 3081