

## Anti-CaMKII Beta/Gamma antibody (480-560 C-Term) (STJ91990)

STJ91990

### GENERAL INFORMATION

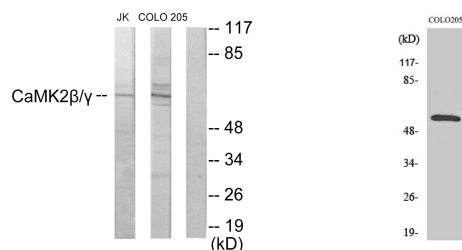
<b>Product Type</b>	Primary antibodies
<b>Short Description</b>	Rabbit polyclonal antibody anti-Calcium/calmodulin-dependent protein kinase type II subunit gamma and Calcium/calmodulin-dependent protein kinase type II subunit beta (480-560 C-Term) is suitable for use in Western Blot, Immunofluorescence, Immunocytochemistry
<b>Applications</b>	WB, IF, ICC, ELISA
<b>Host/Source</b>	Rabbit
<b>Reactivity</b>	Human, Mouse, Rat

### PRODUCT PROPERTIES

<b>Clonality</b>	Polyclonal
<b>Clone ID</b>	
<b>Concentration</b>	1 mg/mL
<b>Conjugation</b>	Unconjugated
<b>Purification</b>	The antibody was affinity-purified from rabbit anti-serum by affinity-chromatography.
<b>Dilution Range</b>	WB 1:500-1:2000 IF 1:200-1:1000 ELISA 1:20000
<b>Formulation</b>	PBS, 50% Glycerol, 0.5% BSA and 0.02% Sodium Azide.
<b>Isotype</b>	IgG
<b>Storage Instruction</b>	Store at -20°C for up to 1 year from the date of receipt, and avoid repeat freeze-thaw cycles.

### TARGET INFORMATION

<b>Gene ID</b>	<a href="#">818</a> <a href="#">816</a>
<b>Gene Symbol</b>	<a href="#">CAMK2G</a> <a href="#">CAMK2B</a>
<b>Uniprot ID</b>	<a href="#">KCC2G_HUMAN</a> <a href="#">KCC2B_HUMAN</a>
<b>Immunogen</b>	The antiserum was produced against synthesized peptide derived from human CaMK2 beta/gamma at amino acid range 509-558
<b>Immunogen Region</b>	480-560 C-Term
<b>Specificity</b>	CaMKII Beta/Gamma polyclonal antibody (Calcium/calmodulin-dependent protein kinase type II subunit gamma and Calcium/calmodulin-dependent protein kinase type II subunit beta) binds to endogenous Calcium/calmodulin-dependent protein kinase type II sub
<b>Immunogen Sequence</b>	



Western blot analysis of lysates from COLO205 and Jurkat cells, using CaMKII Beta/Gamma Antibody. The lane on the right is blocked with the synthesized peptide.

Western blot analysis of various cells using CaMKII Beta/Gamma Polyclonal Antibody

This product is suitable for in-vitro studies under the RESEARCH USE ONLY [RUO] licence. This product must not be used as for diagnostic or other medical purposes.  
St John's Laboratory Ltd, Knowledge Dock Business Centre, University Way, London, E16 2RD | Tel: 0208 223 3081