

Anti-CAMKK2 antibody (350-430 Internal) (STJ91989)

STJ91989

GENERAL INFORMATION

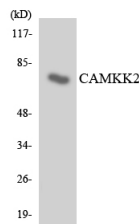
Product Type	Primary antibodies
Short Description	Rabbit polyclonal antibody anti-Calcium/Calmodulin-Dependent Protein Kinase Kinase 2 (350-430 Internal) is suitable for use in Western Blot, Immunohistochemistry, Immunofluorescence and ELISA research applications.
Applications	WB, IHC-P, IF-P, ELISA
Host/Source	Rabbit
Reactivity	Human, Mouse, Rat

PRODUCT PROPERTIES

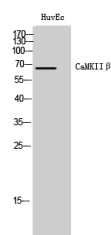
Clonality	Polyclonal
Clone ID	
Concentration	1 mg/mL
Conjugation	Unconjugated
Purification	The antibody was affinity-purified from rabbit anti-serum by affinity-chromatography.
Dilution Range	WB 1:500-1:2000 IHC 1:100-1:300 ELISA 1:10000
Formulation	PBS, 50% Glycerol, 0.5% BSA and 0.02% Sodium Azide.
Isotype	IgG
Storage Instruction	Store at -20°C for up to 1 year from the date of receipt, and avoid repeat freeze-thaw cycles.

TARGET INFORMATION

Gene ID	10645
Gene Symbol	CAMKK2
Uniprot ID	KKCC2_HUMAN
Immunogen	The antiserum was produced against synthesized peptide derived from human CAMKK2 at amino acid range 381-430
Immunogen Region	350-430 Internal
Specificity	CAMKK2 polyclonal antibody (Calcium/Calmodulin-Dependent Protein Kinase 2) binds to endogenous Calcium/Calmodulin-Dependent Protein Kinase Kinase 2 at the amino acid region 350-430 Internal.
Immunogen Sequence	



Western blot analysis of the lysates from HeLa cells using CAMKK2 antibody.



Western blot analysis of HuvEc cells using CaMKII Beta Polyclonal Antibody

This product is suitable for in-vitro studies under the RESEARCH USE ONLY [RUO] licence. This product must not be used as for diagnostic or other medical purposes.
St John's Laboratory Ltd, Knowledge Dock Business Centre, University Way, London, E16 2RD | Tel: 0208 223 3081