

Anti-CaMKII Alpha/Delta antibody (230-310) (STJ91988)

STJ91988

GENERAL INFORMATION

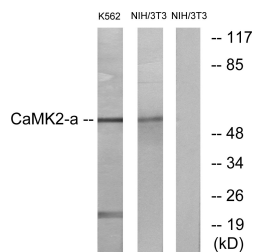
Product Type	Primary antibodies
Short Description	Rabbit polyclonal antibody anti-Calcium/calmodulin-dependent protein kinase type II subunit alpha and Calcium/calmodulin-dependent protein kinase type II subunit delta (230-310) is suitable for use in Western Blot, Immunohistochemistry, Immunofluorescence
Applications	WB, IHC-P, IF, ICC, ELISA
Host/Source	Rabbit
Reactivity	Human, Mouse, Rat

PRODUCT PROPERTIES

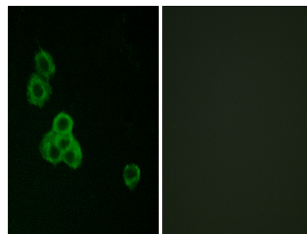
Clonality	Polyclonal
Clone ID	
Concentration	1 mg/mL
Conjugation	Unconjugated
Purification	The antibody was affinity-purified from rabbit anti-serum by affinity-chromatography.
Dilution Range	WB 1:500-1:2000 IHC 1:100-1:300 IF 1:200-1:1000 ELISA 1:10000
Formulation	PBS, 50% Glycerol, 0.5% BSA and 0.02% Sodium Azide.
Isotype	IgG
Storage Instruction	Store at -20°C for up to 1 year from the date of receipt, and avoid repeat freeze-thaw cycles.

TARGET INFORMATION

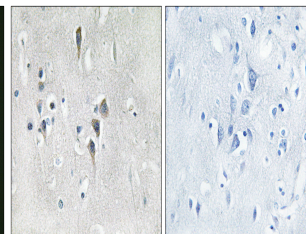
Gene ID	817 815
Gene Symbol	CAMK2D CAMK2A
Uniprot ID	KCC2D_HUMAN KCC2A_HUMAN
Immunogen	The antiserum was produced against synthesized peptide derived from human CaMK2 alpha/delta at amino acid range 256-305
Immunogen Region	230-310
Specificity	CaMKII Alpha/Delta polyclonal antibody (Calcium/calmodulin-dependent protein kinase type II subunit alpha and Calcium/calmodulin-dependent protein kinase type II subunit delta) binds to endogenous Calcium/calmodulin-dependent protein kinase type II s
Immunogen Sequence	



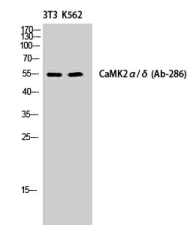
Western blot analysis of lysates from NIH/3T3 and K562 cells, using CaMK2 alpha/delta Antibody. The lane on the right is blocked with the synthesized peptide.



Immunofluorescence analysis of MCF7 cells, using CaMK2 alpha/delta Antibody. The picture on the right is blocked with the synthesized peptide.



Immunohistochemistry analysis of paraffin-embedded human brain tissue, using CaMK2 alpha/delta Antibody. The picture on the right is blocked with the synthesized peptide.



Western blot analysis of NIH-3T3/K562 cells using CaMKII Alpha/Delta Polyclonal Antibody diluted at 1:500

This product is suitable for in-vitro studies under the RESEARCH USE ONLY [RUO] licence. This product must not be used as for diagnostic or other medical purposes.
St John's Laboratory Ltd, Knowledge Dock Business Centre, University Way, London, E16 2RD | Tel: 0208 223 3081