

Anti-CaMKII Alpha/Beta/Delta antibody (240-320) (STJ91987)

STJ91987

GENERAL INFORMATION

Product Type	Primary antibodies
Short Description	Rabbit polyclonal antibody anti-Calcium/calmodulin-dependent protein kinase type II subunit alpha and Calcium/calmodulin-dependent protein kinase type II subunit beta and Calcium/calmodulin-dependent protein kinase type II subunit delta (240-320) is
Applications	IHC-P, IF-P, WB, ELISA
Host/Source	Rabbit
Reactivity	Human, Mouse, Rat

PRODUCT PROPERTIES

Clonality	Polyclonal
Clone ID	
Concentration	1 mg/mL
Conjugation	Unconjugated
Purification	The antibody was affinity-purified from rabbit anti-serum by affinity-chromatography.
Dilution Range	WB 1:500-2000 IHC 1:100-1:300 ELISA 1:5000
Formulation	PBS, 50% Glycerol, 0.5% BSA and 0.02% Sodium Azide.
Isotype	IgG
Storage Instruction	Store at -20°C for up to 1 year from the date of receipt, and avoid repeat freeze-thaw cycles.

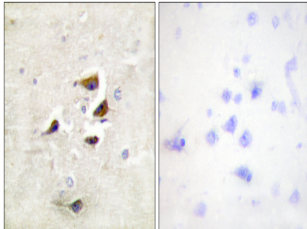
TARGET INFORMATION

Gene ID [817](#)
[816](#)
[815](#)
[CAMK2D](#)
[CAMK2B](#)
[KCC2D_HUMAN](#)
[KCC2B_HUMAN](#)
[KCC2A_HUMAN](#)

Immunogen The antiserum was produced against synthesized peptide derived from human CaMK2 alpha/beta/delta at amino acid range 271-320
Immunogen Region 240-320

Specificity CaMKII Alpha/Beta/Delta polyclonal antibody (Calcium/calmodulin-dependent protein kinase type II subunit alpha and Calcium/calmodulin-dependent protein kinase type II subunit beta and Calcium/calmodulin-dependent protein kinase type II subunit delta)

Immunogen Sequence



Immunohistochemistry analysis of paraffin-embedded human brain tissue, using CaMK2 alpha/beta/delta Antibody. The picture on the right is blocked with the synthesized peptide.