

Anti-CNN2 antibody (90-170 Internal) (STJ91984)

STJ91984

GENERAL INFORMATION

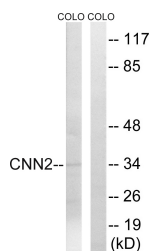
| | |
|--------------------------|--|
| Product Type | Primary antibodies |
| Short Description | Rabbit polyclonal antibody anti-Calponin-2 (90-170 Internal) is suitable for use in Western Blot, Immunofluorescence, Immunocytochemistry and ELISA research applications. |
| Applications | WB, IF, ICC, ELISA |
| Host/Source | Rabbit |
| Reactivity | Human, Mouse |

PRODUCT PROPERTIES

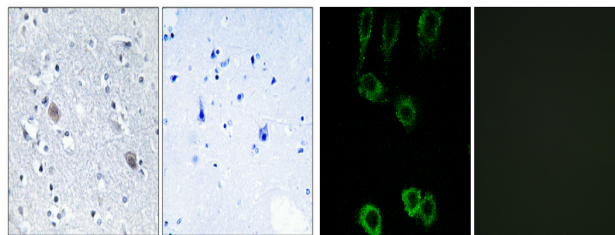
| | |
|----------------------------|--|
| Clonality | Polyclonal |
| Clone ID | |
| Concentration | 1 mg/mL |
| Conjugation | Unconjugated |
| Purification | The antibody was affinity-purified from rabbit anti-serum by affinity-chromatography. |
| Dilution Range | WB 1:500-1:2000 IF 1:200-1:1000 ELISA 1:40000 |
| Formulation | PBS, 50% Glycerol, 0.5% BSA and 0.02% Sodium Azide. |
| Isotype | IgG |
| Storage Instruction | Store at -20°C for up to 1 year from the date of receipt, and avoid repeat freeze-thaw cycles. |

TARGET INFORMATION

| | |
|---------------------------|--|
| Gene ID | 1265 |
| Gene Symbol | CNN2 |
| Uniprot ID | CNN2_HUMAN |
| Immunogen | The antiserum was produced against synthesized peptide derived from human CNN2 at amino acid range 121-170 |
| Immunogen Region | 90-170 Internal |
| Specificity | CNN2 polyclonal antibody (Calponin-2) binds to endogenous Calponin-2 at the amino acid region 90-170 Internal. |
| Immunogen Sequence | |

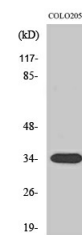


Western blot analysis of lysates from COLO cells, using CNN2 Antibody. The lane on the right is blocked with the synthesized peptide.



Immunohistochemical analysis of paraffin-embedded Human brain. Antibody was diluted at 1:100 (4°C overnight). High-pressure and temperature Tris-EDTA, pH8.0 was used for antigen retrieval. Negative control (right) obtained from antibody was pre-absorbed by immunogen peptide.

Immunofluorescence analysis of A549 cells, using CNN2 Antibody. The picture on the right is blocked with the synthesized peptide.



Western blot analysis of various cells using Calponin 2 Polyclonal Antibody