

Anti-CAPN2 antibody (Internal) (STJ91983)

STJ91983

GENERAL INFORMATION

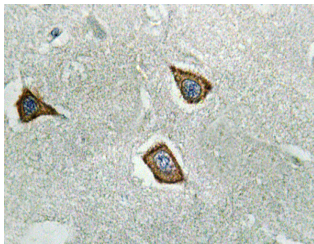
Product Type	Primary antibodies
Short Description	Rabbit polyclonal antibody anti-Calpain-2 Catalytic Subunit (Internal) is suitable for use in Immunohistochemistry, Immunofluorescence and ELISA research applications.
Applications	IHC-P, IF-P, ELISA
Host/Source	Rabbit
Reactivity	Human, Mouse, Rat

PRODUCT PROPERTIES

Clonality	Polyclonal
Clone ID	
Concentration	1 mg/mL
Conjugation	Unconjugated
Purification	The antibody was affinity-purified from rabbit anti-serum by affinity-chromatography.
Dilution Range	IHC 1:100-1:300 ELISA 1:40000
Formulation	PBS, 50% Glycerol, 0.5% BSA and 0.02% Sodium Azide.
Isotype	IgG
Storage Instruction	Store at -20°C for up to 1 year from the date of receipt, and avoid repeat freeze-thaw cycles.

TARGET INFORMATION

Gene ID	824
Gene Symbol	CAPN2
Uniprot ID	CAN2_HUMAN
Immunogen	The antiserum was produced against synthesized peptide derived from human Calpain 2 at amino acid range 305-354
Immunogen Region	Internal
Specificity	CAPN2 polyclonal antibody (Calpain-2 Catalytic Subunit) binds to endogenous Calpain-2 Catalytic Subunit at the amino acid region Internal.
Immunogen Sequence	



Immunohistochemistry analysis of Calpain2 antibody in paraffin-embedded human brain tissue.

This product is suitable for in-vitro studies under the RESEARCH USE ONLY [RUO] licence. This product must not be used as for diagnostic or other medical purposes.
St John's Laboratory Ltd, Knowledge Dock Business Centre, University Way, London, E16 2RD | Tel: 0208 223 3081