

Anti-CAPN9 antibody (450-530 Internal) (STJ91982)

STJ91982

GENERAL INFORMATION

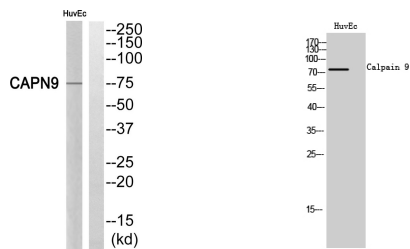
Product Type	Primary antibodies
Short Description	Rabbit polyclonal antibody anti-Calpain-9 (450-530 Internal) is suitable for use in Western Blot and ELISA research applications.
Applications	WB, ELISA
Host/Source	Rabbit
Reactivity	Human, Rat, Mouse

PRODUCT PROPERTIES

Clonality	Polyclonal
Clone ID	
Concentration	1 mg/mL
Conjugation	Unconjugated
Purification	The antibody was affinity-purified from rabbit anti-serum by affinity-chromatography.
Dilution Range	WB 1:500-1:2000 ELISA 1:5000
Formulation	PBS, 50% Glycerol, 0.5% BSA and 0.02% Sodium Azide.
Isotype	IgG
Storage Instruction	Store at -20°C for up to 1 year from the date of receipt, and avoid repeat freeze-thaw cycles.

TARGET INFORMATION

Gene ID	10753
Gene Symbol	CAPN9
Uniprot ID	CAN9_HUMAN
Immunogen	The antiserum was produced against synthesized peptide derived from human CAPN9 at amino acid range 481-530
Immunogen Region	450-530 Internal
Specificity	CAPN9 polyclonal antibody (Calpain-9) binds to endogenous Calpain-9 at the amino acid region 450-530 Internal.
Immunogen Sequence	



Western blot analysis of CAPN9 Antibody. The lane on the right is blocked with the CAPN9 peptide.

Western blot analysis of HuvEc cells using Calpain 9 Polyclonal Antibody

This product is suitable for in-vitro studies under the RESEARCH USE ONLY [RUO] licence. This product must not be used as for diagnostic or other medical purposes.
St John's Laboratory Ltd, Knowledge Dock Business Centre, University Way, London, E16 2RD | Tel: 0208 223 3081