

Anti-CAPN12 antibody (190-270 Internal) (STJ91981)

STJ91981

GENERAL INFORMATION

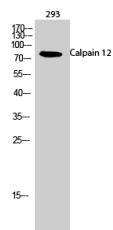
| | |
|--------------------------|--|
| Product Type | Primary antibodies |
| Short Description | Rabbit polyclonal antibody anti-Calpain-12 (190-270 Internal) is suitable for use in Western Blot and ELISA research applications. |
| Applications | WB, ELISA |
| Host/Source | Rabbit |
| Reactivity | Human, Rat, Mouse |

PRODUCT PROPERTIES

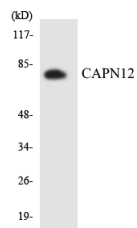
| | |
|----------------------------|--|
| Clonality | Polyclonal |
| Clone ID | |
| Concentration | 1 mg/mL |
| Conjugation | Unconjugated |
| Purification | The antibody was affinity-purified from rabbit anti-serum by affinity-chromatography. |
| Dilution Range | WB 1:500-1:2000 ELISA 1:5000 |
| Formulation | PBS, 50% Glycerol, 0.5% BSA and 0.02% Sodium Azide. |
| Isotype | IgG |
| Storage Instruction | Store at -20°C for up to 1 year from the date of receipt, and avoid repeat freeze-thaw cycles. |

TARGET INFORMATION

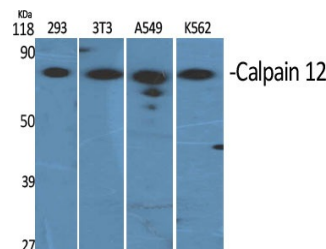
| | |
|---------------------------|---|
| Gene ID | 147968 |
| Gene Symbol | CAPN12 |
| Uniprot ID | CAN12_HUMAN |
| Immunogen | The antiserum was produced against synthesized peptide derived from human CAPN12 at amino acid range 221-270 |
| Immunogen Region | 190-270 Internal |
| Specificity | CAPN12 polyclonal antibody (Calpain-12) binds to endogenous Calpain-12 at the amino acid region 190-270 Internal. |
| Immunogen Sequence | |



Western blot analysis of 293 cells using Calpain 12 Polyclonal Antibody



Western blot analysis of the lysates from K562 cells using CAPN12 antibody.



Western blot analysis of various cells using Calpain 12 Polyclonal Antibody

This product is suitable for in-vitro studies under the RESEARCH USE ONLY [RUO] licence. This product must not be used as for diagnostic or other medical purposes.
St John's Laboratory Ltd, Knowledge Dock Business Centre, University Way, London, E16 2RD | Tel: 0208 223 3081