

Anti-CAGE1 antibody (680-760 C-Term) (STJ91971)

STJ91971

GENERAL INFORMATION

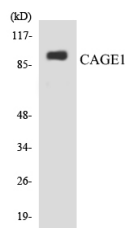
Product Type	Primary antibodies
Short Description	Rabbit polyclonal antibody anti-Cancer-Associated Gene 1 Protein (680-760 C-Term) is suitable for use in Western Blot, Immunohistochemistry, Immunofluorescence and ELISA research applications.
Applications	WB, IHC-P, IF-P, ELISA
Host/Source	Rabbit
Reactivity	Human, Rat, Mouse

PRODUCT PROPERTIES

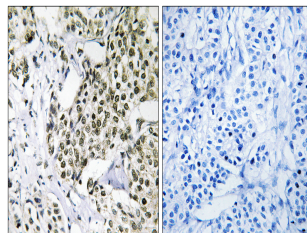
Clonality	Polyclonal
Clone ID	
Concentration	1 mg/mL
Conjugation	Unconjugated
Purification	The antibody was affinity-purified from rabbit anti-serum by affinity-chromatography.
Dilution Range	WB 1:500-1:2000 IHC 1:100-1:300 ELISA 1:40000
Formulation	PBS, 50% Glycerol, 0.5% BSA and 0.02% Sodium Azide.
Isotype	IgG
Storage Instruction	Store at -20°C for up to 1 year from the date of receipt, and avoid repeat freeze-thaw cycles.

TARGET INFORMATION

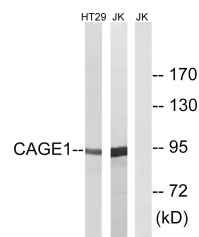
Gene ID	285782
Gene Symbol	CAGE1
Uniprot ID	CAGE1_HUMAN
Immunogen	The antiserum was produced against synthesized peptide derived from human CAGE1 at amino acid range 711-760
Immunogen Region	680-760 C-Term
Specificity	CAGE1 polyclonal antibody (Cancer-Associated Gene 1 Protein) binds to endogenous Cancer-Associated Gene 1 Protein at the amino acid region 680-760 C-Term.
Immunogen Sequence	



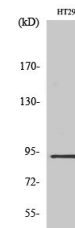
Western blot analysis of the lysates from HepG2 cells using CAGE1 antibody.



Immunohistochemistry analysis of paraffin-embedded human breast carcinoma tissue, using CAGE1 Antibody. The picture on the right is blocked with the synthesized peptide.



Western blot analysis of lysates from HT-29 and Jurkat cells, using CAGE1 Antibody. The lane on the right is blocked with the synthesized peptide.



Western blot analysis of various cells using CAGE-1 Polyclonal Antibody diluted at 1: 2000