

## Anti-CDH9 antibody (180-260 Internal) (STJ91969)

STJ91969

### GENERAL INFORMATION

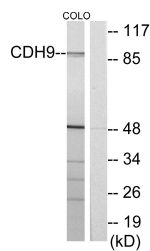
<b>Product Type</b>	Primary antibodies
<b>Short Description</b>	Rabbit polyclonal antibody anti-Cadherin-9 (180-260 Internal) is suitable for use in Western Blot, Immunohistochemistry, Immunofluorescence, Immunocytochemistry and ELISA research applications.
<b>Applications</b>	WB, IHC-P, IF, ICC, ELISA
<b>Host/Source</b>	Rabbit
<b>Reactivity</b>	Human, Mouse

### PRODUCT PROPERTIES

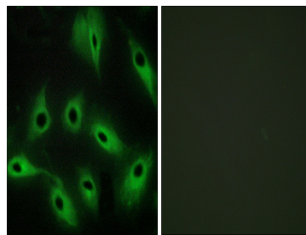
<b>Clonality</b>	Polyclonal
<b>Clone ID</b>	
<b>Concentration</b>	1 mg/mL
<b>Conjugation</b>	Unconjugated
<b>Purification</b>	The antibody was affinity-purified from rabbit anti-serum by affinity-chromatography.
<b>Dilution Range</b>	WB 1:500-1:2000 IHC 1:100-1:300 IF 1:200-1:1000 ELISA 1:5000
<b>Formulation</b>	PBS, 50% Glycerol, 0.5% BSA and 0.02% Sodium Azide.
<b>Isotype</b>	IgG
<b>Storage Instruction</b>	Store at -20°C for up to 1 year from the date of receipt, and avoid repeat freeze-thaw cycles.

### TARGET INFORMATION

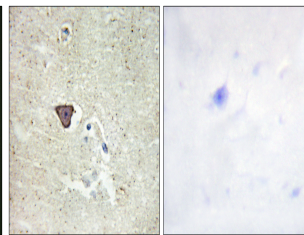
<b>Gene ID</b>	1007
<b>Gene Symbol</b>	CDH9
<b>Uniprot ID</b>	CADH9_HUMAN
<b>Immunogen</b>	The antiserum was produced against synthesized peptide derived from human CDH9 at amino acid range 201-250
<b>Immunogen Region</b>	180-260 Internal
<b>Specificity</b>	CDH9 polyclonal antibody (Cadherin-9) binds to endogenous Cadherin-9 at the amino acid region 180-260 Internal.
<b>Immunogen Sequence</b>	



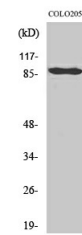
Western blot analysis of lysates from COLO cells, using CDH9 Antibody. The lane on the right is blocked with the synthesized peptide.



Immunofluorescence analysis of HeLa cells, using CDH9 Antibody. The picture on the right is blocked with the synthesized peptide.



Immunohistochemistry analysis of paraffin-embedded human brain tissue, using CDH9 Antibody. The picture on the right is blocked with the synthesized peptide.



Western blot analysis of various cells using Cadherin-9 Polyclonal Antibody.

This product is suitable for in-vitro studies under the RESEARCH USE ONLY [RUO] licence. This product must not be used as for diagnostic or other medical purposes.  
St John's Laboratory Ltd, Knowledge Dock Business Centre, University Way, London, E16 2RD | Tel: 0208 223 3081