

## Anti-CDH24 antibody (50-130 N-Term) (STJ91965)

STJ91965

### GENERAL INFORMATION

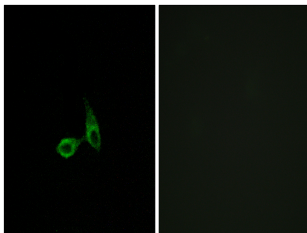
<b>Product Type</b>	Primary antibodies
<b>Short Description</b>	Rabbit polyclonal antibody anti-Cadherin-24 (50-130 N-Term) is suitable for use in Immunofluorescence, Immunocytochemistry, Western Blot and ELISA research applications.
<b>Applications</b>	IF, ICC, WB, ELISA
<b>Host/Source</b>	Rabbit
<b>Reactivity</b>	Human, Mouse

### PRODUCT PROPERTIES

<b>Clonality</b>	Polyclonal
<b>Clone ID</b>	
<b>Concentration</b>	1 mg/mL
<b>Conjugation</b>	Unconjugated
<b>Purification</b>	The antibody was affinity-purified from rabbit anti-serum by affinity-chromatography.
<b>Dilution Range</b>	WB 1:500-2000 IF 1:200-1:1000 ELISA 1:10000
<b>Formulation</b>	PBS, 50% Glycerol, 0.5% BSA and 0.02% Sodium Azide.
<b>Isotype</b>	IgG
<b>Storage Instruction</b>	Store at -20°C for up to 1 year from the date of receipt, and avoid repeat freeze-thaw cycles.

### TARGET INFORMATION

<b>Gene ID</b>	64403
<b>Gene Symbol</b>	CDH24
<b>Uniprot ID</b>	CAD24_HUMAN
<b>Immunogen</b>	The antiserum was produced against synthesized peptide derived from human CDH24 at amino acid range 81-130
<b>Immunogen Region</b>	50-130 N-Term
<b>Specificity</b>	CDH24 polyclonal antibody (Cadherin-24) binds to endogenous Cadherin-24 at the amino acid region 50-130 N-Term.
<b>Immunogen Sequence</b>	



Immunofluorescence analysis of HepG2 cells, using CDH24 Antibody. The picture on the right is blocked with the synthesized peptide.