

Anti-CDH23 antibody (30-110 N-Term) (STJ91964)

STJ91964

GENERAL INFORMATION

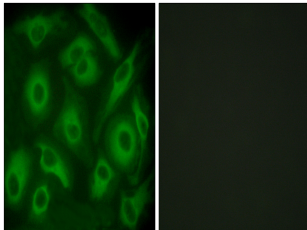
Product Type	Primary antibodies
Short Description	Rabbit polyclonal antibody anti-Cadherin-23 (30-110 N-Term) is suitable for use in Immunofluorescence, Immunocytochemistry and ELISA research applications.
Applications	IF, ICC, ELISA
Host/Source	Rabbit
Reactivity	Human, Mouse, Rat

PRODUCT PROPERTIES

Clonality	Polyclonal
Clone ID	
Concentration	1 mg/mL
Conjugation	Unconjugated
Purification	The antibody was affinity-purified from rabbit anti-serum by affinity-chromatography.
Dilution Range	IF 1:200-1:1000 ELISA 1:10000
Formulation	PBS, 50% Glycerol, 0.5% BSA and 0.02% Sodium Azide.
Isotype	IgG
Storage	Store at -20°C for up to 1 year from the date of receipt, and avoid repeat freeze-thaw cycles.
Instruction	

TARGET INFORMATION

Gene ID	64072
Gene Symbol	CDH23
Uniprot ID	CAD23_HUMAN
Immunogen	The antiserum was produced against synthesized peptide derived from human CDH23 at amino acid range 61-110
Immunogen Region	30-110 N-Term
Specificity	CDH23 polyclonal antibody (Cadherin-23) binds to endogenous Cadherin-23 at the amino acid region 30-110 N-Term.
Immunogen Sequence	



Immunofluorescence analysis of HeLa cells, using CDH23 Antibody. The picture on the right is blocked with the synthesized peptide.