

Anti-CDH19 antibody (340-420 Internal) (STJ91961)

STJ91961

GENERAL INFORMATION

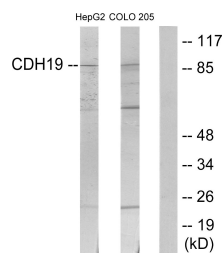
Product Type	Primary antibodies
Short Description	Rabbit polyclonal antibody anti-Cadherin-19 (340-420 Internal) is suitable for use in Western Blot, Immunohistochemistry, Immunofluorescence, Immunocytochemistry and ELISA research applications.
Applications	WB, IHC-P, IF, ICC, ELISA
Host/Source	Rabbit
Reactivity	Human, Rat, Mouse

PRODUCT PROPERTIES

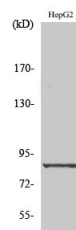
Clonality	Polyclonal
Clone ID	
Concentration	1 mg/mL
Conjugation	Unconjugated
Purification	The antibody was affinity-purified from rabbit anti-serum by affinity-chromatography.
Dilution Range	WB 1:500-1:2000 IHC 1:100-1:300 IF 1:200-1:1000 ELISA 1:20000
Formulation	PBS, 50% Glycerol, 0.5% BSA and 0.02% Sodium Azide.
Isotype	IgG
Storage Instruction	Store at -20°C for up to 1 year from the date of receipt, and avoid repeat freeze-thaw cycles.

TARGET INFORMATION

Gene ID	28513
Gene Symbol	CDH19
Uniprot ID	CAD19_HUMAN
Immunogen	The antiserum was produced against synthesized peptide derived from human CDH19 at amino acid range 371-420
Immunogen Region	340-420 Internal
Specificity	CDH19 polyclonal antibody (Cadherin-19) binds to endogenous Cadherin-19 at the amino acid region 340-420 Internal.
Immunogen Sequence	



Western blot analysis of lysates from HepG2 and COLO205 cells, using CDH19 Antibody. The lane on the right is blocked with the synthesized peptide.



Western blot analysis of various cells using Cadherin-19 Polyclonal Antibody diluted at 1: 1000